



PUBLIC SAFETY

Philosophy, Policy, Employees,
Actions Completed and Needs



November 14, 2023

State of the City Series

“Every citizen has a fundamental civil right to be secure and safe. While the causes of crime may be multi-factorial, we cannot allow violence to rule our City. In the America of today, fear of crime does not rule us, but it influences how we feel; it dictates travel and recreation decisions; and it saddles us with a lawlessness that must be stopped. Every community must take on criminal behavior with all deliberate speed, recognizing our desire to live freely and maintain constitutional policing. What we know as the biggest contributor: Illegal gun possession is driving violent crime.”

Mayor Jacques Roy

Previously, the City of Alexandria and the Central Louisiana Chamber of Commerce launched programs to re-invigorate various neighborhood groups and partnerships. (2011-14)

The purpose was to engage citizens in the first and second phases of **SafeA/lex**.

As a result, many more neighborhood groups and citizens involved in numerous neighborhood vibrancy issues were created and maintained in a very successful ecosystem. The Chamber created a standing committee for public safety to address regional issues and advocate for best-practice programming. In the last four years, the award-winning **SafeA/lex** atrophied along each programming line. Not any longer! It worked before and it will work again.

The chance *additional* young offenders will shoot and kill other youth in 2024

100%

Introduction / Roots

If you are here looking for an omnibus government solution instead of being ready to offer how all of us—that means you—will offer a *particularized* one—you don't get it yet!

Root causes

- disconnection to self-soothing/solutions
- disconnection to deep relationships/family relations
- bullying
- poor/bad external relations and influences
- necessitous circumstances/addiction
- anger management/lack of self control
- *covetousness*/unreasonable desires

INDIVIDUAL PROTECTIVE FACTORS

- Intolerant attitude toward deviance
- High IQ
- High grade point average (as an indicator of high academic achievement)
- High educational aspirations
- Positive social orientation
- Popularity acknowledged by peers
- Highly developed social skills/competencies
- Highly developed skills for realistic planning
- Religious beliefs

FAMILY PROTECTIVE FACTORS

- Connectedness to family or adults outside the family
- Ability to discuss problems with parents
- Perceived parental expectations about school performance are high
- Frequent shared activities with parents
- Consistent presence of parent during at least one of the following: when awakening, when arriving

home from school, at evening mealtime, or when going to bed

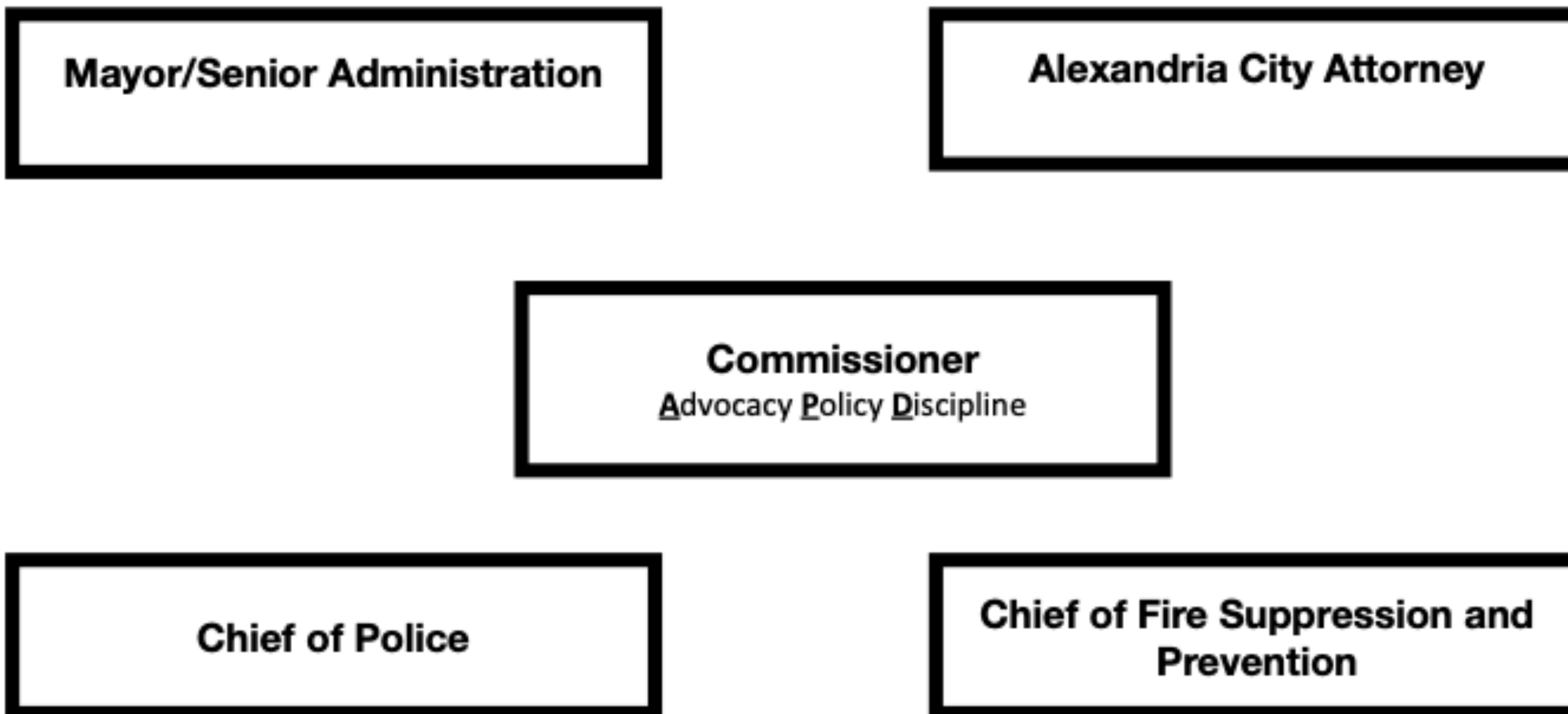
- Involvement in social activities
- Parental/family use of constructive strategies for coping with problems (provision of models of constructive coping)

PEER AND SOCIAL PROTECTIVE FACTORS

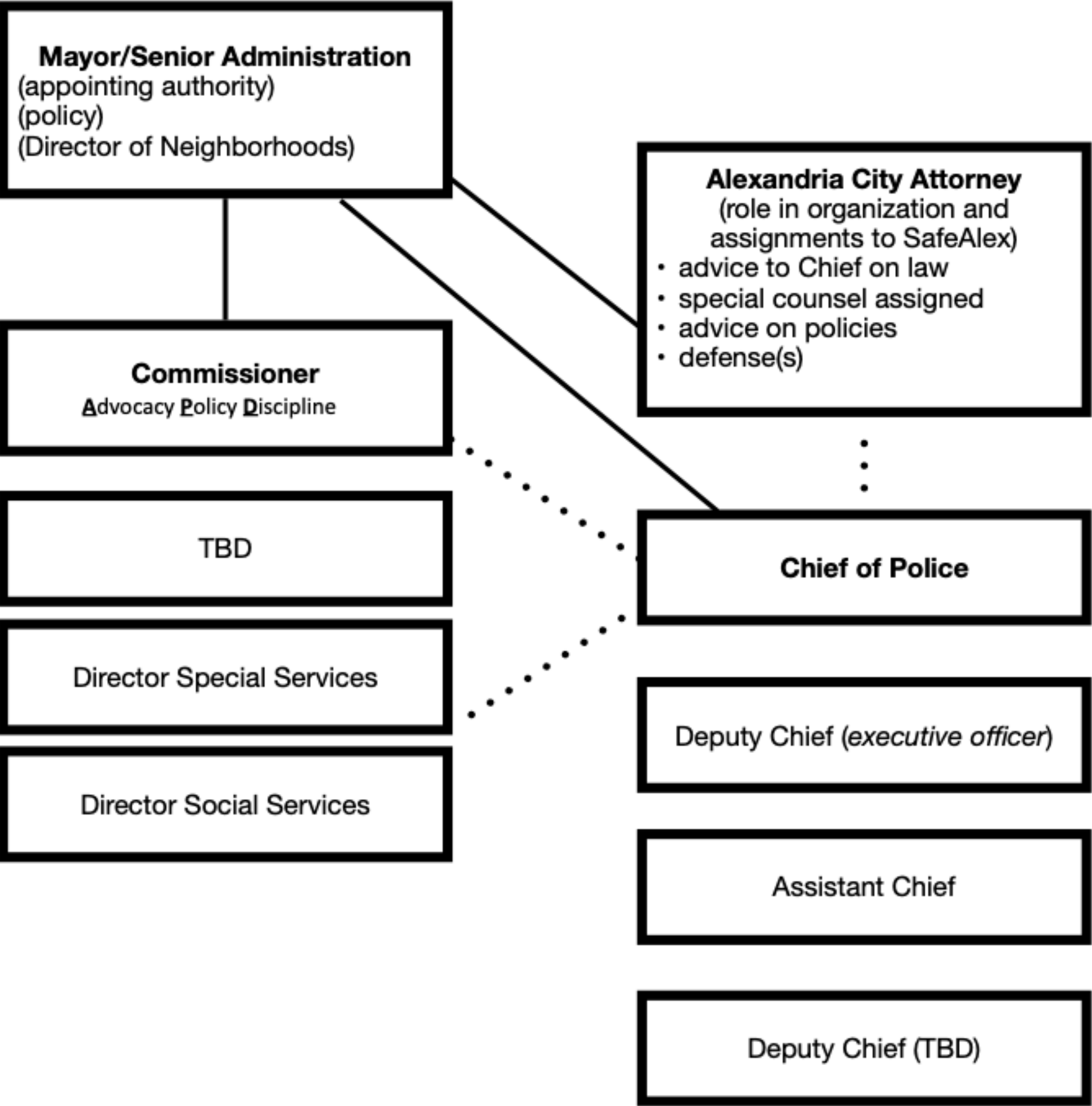
- Possession of affective relationships with those at school that are strong, close, and prosocially oriented
- Commitment to school (an investment in school and in doing well at school)
- Close relationships with non-deviant peers
- Membership in peer groups that do not condone antisocial behavior
- Involvement in prosocial activities
- Exposure to school climates with the following characteristics:
 - Intensive supervision
 - Clear behavior rules
 - Firm disciplinary methods
 - Engagement of parents and teachers

Organizational and Steps

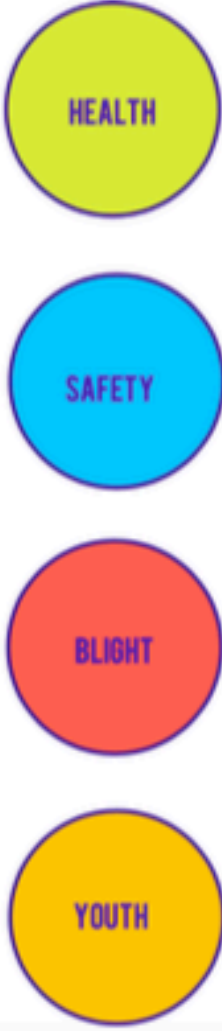
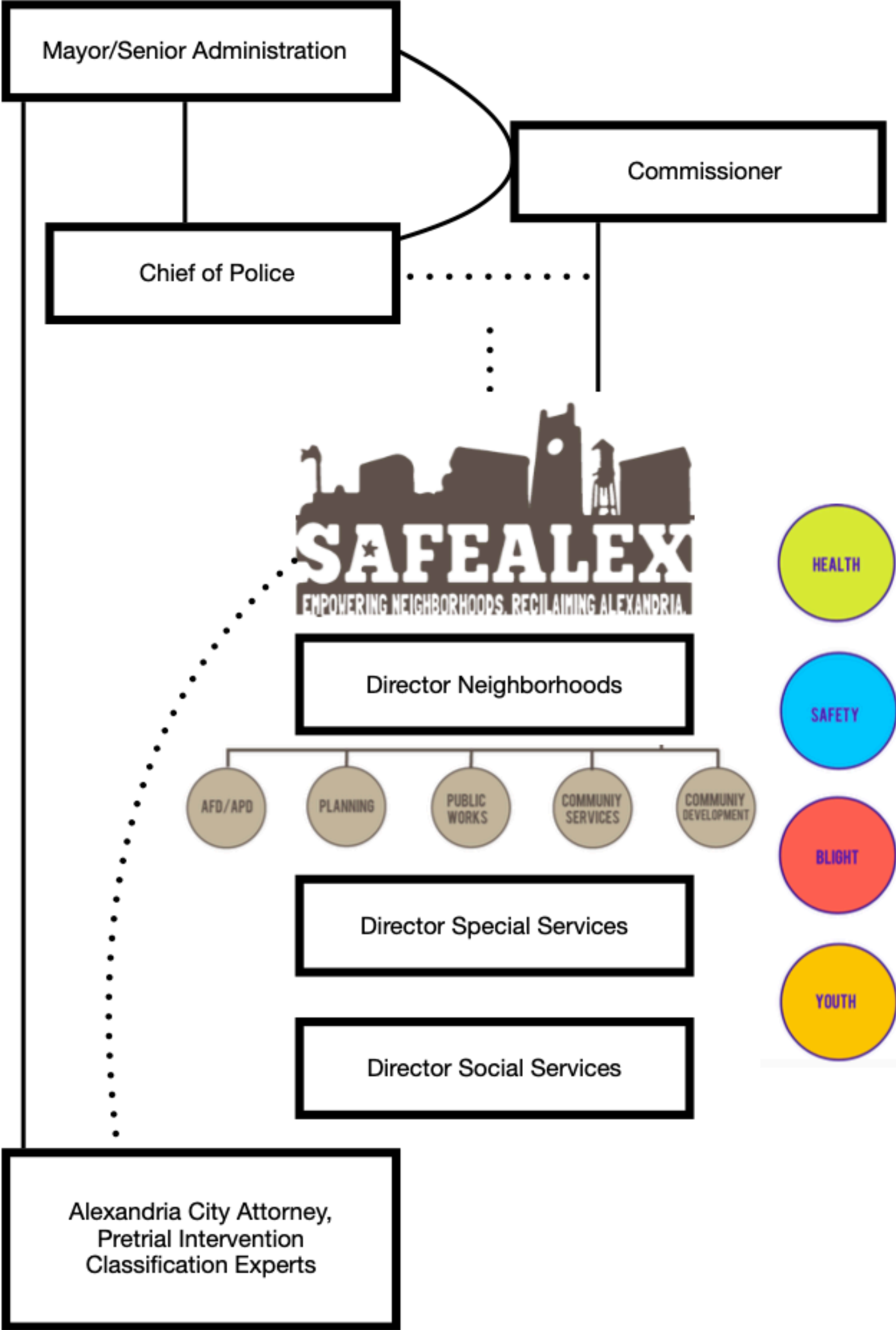
Organization of Public Safety



**Organization of Alexandria Police Department
Leadership and Interplay with SafeAlex**



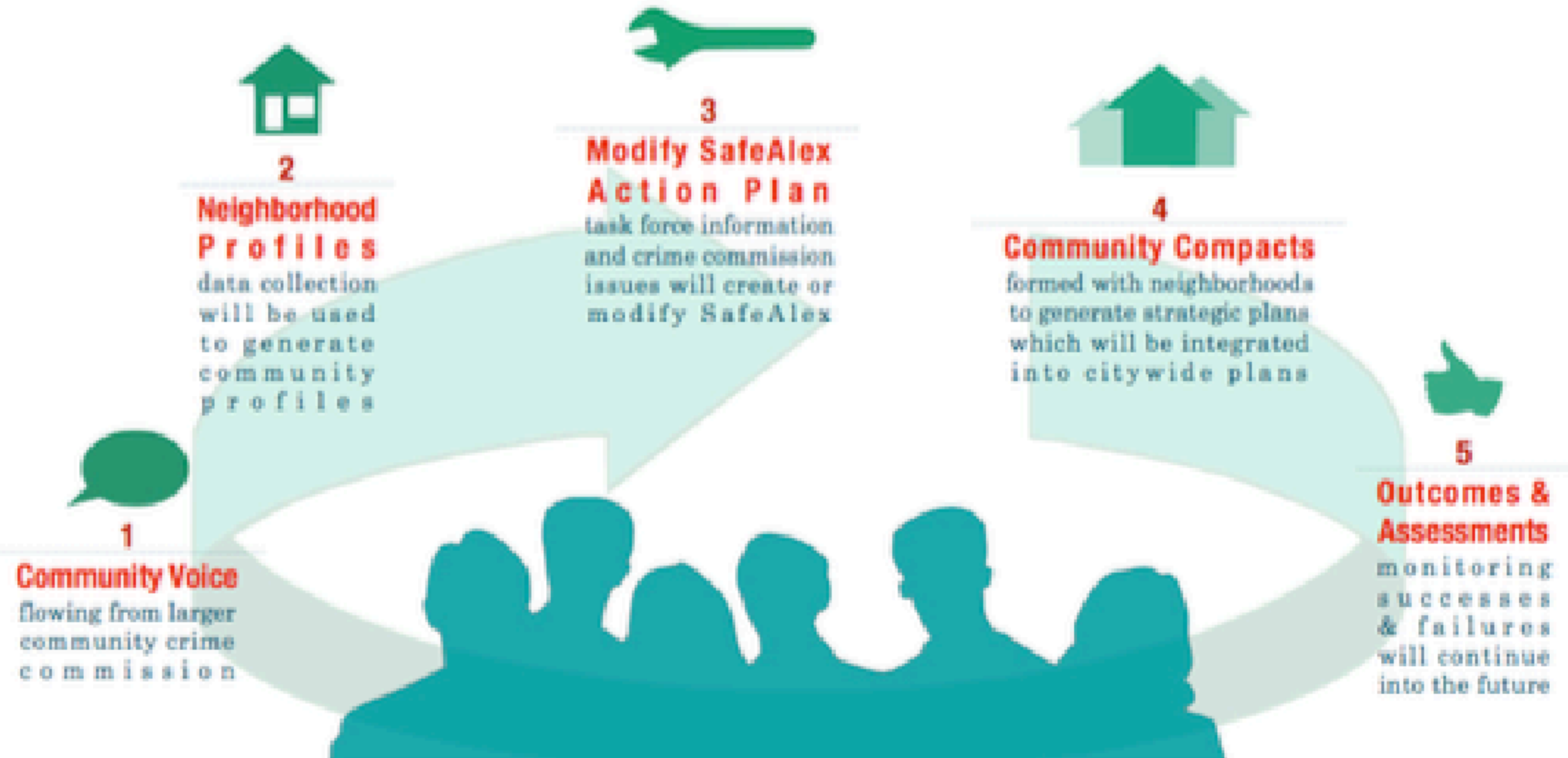
Organizational Chart



HOW IT WORKS



SafeAlex works directly with neighborhood associations and community leaders to implement "Safe Growth" strategies.



- Ministerial Alliances
 - Identifying and scholarships to outstanding youth
 - Commitment of the congregation
- Neighborhood Alliances
 - Cleaning up
 - Healthy initiatives

- Youth Programming
 - Empathy (valuing life)
 - Empowerment
 - Aspirations
 - Aptitudinal Assistance
 - Resources
 - Mental Health



- **Develop strong neighbor relations where neighbors watch out for each other.**
- **Educate neighbors to recognize suspicious activity and take appropriate action.**
- **Implement other crime deterrents such as basic home security measures.**
- **Reduce neighborhood crime through crime prevention programs and literature.**



- **Improve the physical appearance of dilapidated neighborhoods.**
- **Eliminate vacant, dilapidated and abandoned properties causing economic distress.**
- **Restore distressed neighborhoods as attractive and healthy parts of the community.**



SHAPEUP

- Support healthy eating and physical activity throughout the city.
- Implementing sustainable policies and environmental changes.



CRIME PREVENTION

- Develop strong neighbor relations where neighbors watch out for each other.
- Educate neighbors to recognize suspicious activity and take appropriate action.
- Implement other crime deterrents such as basic home security measures.
- Contribute to the reduction of neighborhood crime through crime prevention programs and literature.



CLEANUP

- Improve the physical appearance of dilapidated neighborhoods.
- Eliminate the vacant, dilapidated and abandoned properties causing economic distress.
- Restore distressed neighborhoods as appealing, attractive and healthy parts of the community.



ALEXCORPS

- Employ short-term volunteer programs throughout the City in a number of different areas.
- Partner with organizations to identify additional short-term volunteer opportunities both locally and regionally.
- Establish the Youth Commission to take on project-specific tasks.
- Help the City to research, write, and propose specific ordinances.

- We must try new methods and measure whether they produce results;
- Publish the results;
- Continue those methods that work; and
- Discontinue processes that do NOT work.

Stop repeating processes that do not work just because it is how it was done.

Crime Prevention



CRIME PREVENTION

SafeAlex Crime Prevention incorporates both the uniformed patrol of the Alexandria Police Department (APD) and a civilian component for community engagement and problem identification. SafeAlex Crime Prevention project design utilizes concepts from problem-oriented policing, Second Generation Crime Prevention Through Environmental Design (CPTED), and place-based policing. The overarching goal of the program is to establish a disciplined approach with multiple partners that has measurable benchmarks, valid empirical observation and analysis, and a high level of accountability.



Action Items

Democracy, Faith & Community Health

Built around eight pillars:

1. Institutional infrastructure (what's working, what do we have, what do we need?)
2. Respect and Comity, Free Exercise v. Non-Establishment (interfaith, ecumenism)
3. Proselytizing v. "Onerous Charity" – The How to use faith-based, good ideas without forcing a particular faith
4. Ministerial Alliances, why and how they help us all
5. MOED, economic development as part of faith
6. Faith and Race
7. The Nehemiah Initiative
8. Metrics

The Mayor is working with a group of pastors to relaunch this program built on years of local relationships.

- ❖ Support healthy eating and physical activity throughout the city.
- ❖ Implement sustainable policies and environmental changes (CPTED).
- ❖ Develop strong neighborhood relations.
- ❖ Educate neighbors to recognize suspicious activity and take appropriate action.
- ❖ Contribute to the reduction of neighborhood crime through health & crime prevention programs and literature.
- ❖ Improve the physical appearance of dilapidated neighborhoods.
- ❖ Eliminate the vacant, dilapidated and abandoned properties causing economic distress.
- ❖ Restore distressed neighborhoods as appealing, attractive and healthy parts of the community.
- ❖ Employ short-term volunteer programs throughout the City in a number of different areas.
- ❖ Partner with organizations to identify additional short-term volunteer opportunities both locally and regionally.
- ❖ Establish Commissions to take on project-specific tasks and programming.
- ❖ Responsibility through volunteerism

- #1— **Neighborhoods Re-Introduction (April 2023)(Embers)**
- #2— **Judges, Prosecutors and Allied Safety Professionals (April 2023) (interviews)**
- #3— Judges, Prosecutors and Allied Safety Professionals *Part 2 (January 2024)*
- #4— Judges, Prosecutors and Allied Safety Professionals *Part 3 (January 2024)*
- #5— Constitutional Policing and Special Units **(February 2024)**
- #6— Neighborhoods Drill-Down Discussion **(March 2024) (Neighborhood Certified Captains)**

#7— Policing, Industry, and Community Media Campaign Series

(Published April 2023)

- Intelligence-led and Evidence-based policing, place-based policing and other versions of Focused Deterrence
- Mental Health and Public Safety
- Guns and Youth
- Media and Impacts on Incident Narratives (what is stated and not stated; implicit bias and racism; root-cause avoidance; perceived preferences of intended audiences; and subject bias)

#8— Recreation, Health and Children

#9— Education and Workforce

#10— Community Summit Wrap-Up (June/ July 2024)