

Prescott Rd Substation Breaker 1 2.4kV to 7.2kV Conversion and Reconductor

Work Order No.: N/A

Project Staking Sheets



City of Alexandria

915 Third Street

Post Office Box 71

Alexandria, Louisiana 71309

Prepared By:

FOR BIDDING PURPOSES ONLY

BHA, Inc.

Consulting Engineers

Baton Rouge, Louisiana

(225) 927-7430

October, 2021

BHA #2019S21B

Revision 2 - 11/02/2021

STAKING SHEET

FOR BIDDING PURPOSES ONLY

Revision 2 - 11/02/2021



W. O. #: N/A

Project Name:

Prescott Rd Substation Breaker 1 2.4kV to 7.2kV Conversion and Reconductor

BHA Project No.: 2019S21B

Pole No.	Pole Hgt. & Class	Hot (H) or Cold	I R L	PRIMARY		SECONDARY		SERVICES		Primary Units (Pole Tops)	Transformer Units	Secondary Units	Service Units	R/W Units	Grounding Units	Guying Units	Anchor Units	Miscellaneous Units		
				Span	Primary Conductor	Neutral Conductor	Span	Conductor	Span									Conductor	a	b
TAKE OFF	E) 45-5	H	I															2) M5-8	J8	3) M5-1A
* SEE DWG 1 OF 11		H	I															4) M5-5	J1	2) J2
		H	I															2) DTIE-2		
#1	45-3	H	R						2) C7	*RAISE XARMS TO INSTALL NEUT								3) M5-1A		
	45-3	H	I						B7					M2-1						
		H	I	203	2) D2ACSR	D2ACSR			B8									2) DTIE-2	3) M5-1A	
		H	L															3) D2.4DH		
#1-1	45-3	H	R	21	D2ACSR				C8	*RAISE XARM TO INSTALL NEUT								3) DTIE-1	3) M5-1A	
	45-3	H	I	21		D2ACSR			B8					M2-1				M5-1A		
		H	L															3) D2.4DH	2) DRJMPPR	
#1-2	40-3	H	R	168	D2ACSR				C1A	G10	J1	K2-2								3) DTIE-1
		H	R							G2B24-120-15										
	40-3	H	I	168		D2ACSR			B1	G11				M2-1				M5-1X		3) DTIE-1
		H	I							G1B72-120-15										
		H	L															3) D2.4DH	DRS8H	



STAKING SHEET

FOR BIDDING PURPOSES ONLY

Revision 2 - 11/02/2021

W. O. #: N/A

Project Name:

Prescott Rd Substation Breaker 1 2.4kV to 7.2kV Conversion and Reconductor

BHA Project No.: 2019S21B

Pole No.	Pole Hgt. & Class	Hot (H) or Cold	I R L	PRIMARY			SECONDARY		SERVICES		Primary Units (Pole Tops)	Transformer Units	Secondary Units	Service Units	R/W Units	Grounding Units	Guying Units	Anchor Units	Miscellaneous Units			
				Span	Primary Conductor	Neutral Conductor	Span	Conductor	Span	Conductor									a	b	c	
#1-3	40-3	H	R	130	D2ACSR					C7	G10	J2	2) K2-2									
		H	R								G2B24-120-25											
	40-3	H	I	130		D2ACSR				B7	G11				M2-1				M5-1X			
		H	I								G1B72-120-15									3) D2.4DH	2) DRS8H	
		H	L																			
#2	40-3	H	R	145	D2ACSR					C1A	G10	J1	K2-2							3) DTIE-1		
		H	R								G2B24-120-25											
	40-3	H	I	145		D2ACSR				B1	G11	J1	K2-2		M2-1					3) DTIE-1	M5-1X	
		H	I								G1B72-120-25											
		H	L																	DRS8H	3) D2.4TH	
#3	40-3	H	R	197	D2ACSR					C8	G20	J1	K2-2							3) DTIE-2	3) M5-1A	
		H	R								G2B24-120-37		K3-1/0									
		H	R								G2B24-120-15											
	40-3	H	I	197		D2ACSR				B1	G21	J1	K2-2		M2-1					3) DTIE-1	2) M5-1X	
		H	I								G2B72-120-37		K3-1/0									
		H	I								G2B72-120-15											

STAKING SHEET

FOR BIDDING PURPOSES ONLY

Revision 2 - 11/02/2021



W. O. #: N/A

Project Name:

Prescott Rd Substation Breaker 1 2.4kV to 7.2kV Conversion and Reconductor

BHA Project No.: 2019S21B

Pole No.	Pole Hgt. & Class	Hot (H) or Cold	I R L	PRIMARY			SECONDARY		SERVICES		Primary Units (Pole Tops)	Transformer Units	Secondary Units	Service Units	R/W Units	Grounding Units	Guying Units	Anchor Units	Miscellaneous Units			
				Span	Primary Conductor	Neutral Conductor	Span	Conductor	Span	Conductor									a	b	c	
		H	L																3) D2.4DH	DRS8H	DRS9H	
#4	40-3	H	R	234	3) D6CU					C1A										3) DTIE-1		
	40-3	H	I	234	2) D2ACSR	D2ACSR				B1					M2-1					3) DTIE-1		
		H	L																3) D2.4TH			
#5	40-3	H	R	67	3) D6CU					C1A	G20	J2	K2-2							3) DTIE-1		
		H	R								G2B24-120-37											
		H	R								G2B24-120-15											
	40-3	H	I	67	2) D2ACSR	D2ACSR				B1	G21	J2	K3-2		M2-1					3) DTIE-1	2) M5-1X	
		H	I								G2B72-120-37											
		H	I								G2B72-120-15											
		H	L																3) D2.4TH	2) DRS9H		
#6	40-5	H	R	151	3) D6CU					B1	G10	J2	2) K2-2		M2-1					2) M5-8	M5-5	3) DTIE-1
		H	R								G2B24-120-25									M5-1A	J1	2) K2-2
	40-3	H	I	151	2) D2ACSR	D2ACSR				B1	G11	J2	2) K2-2		M2-1					3) DTIE-1	J1	2) K2-2
		H	I								G1B72-120-25									M5-1X		
		H	L																2) D2.4TH	D2.4DH	2) DRS8H	

STAKING SHEET

FOR BIDDING PURPOSES ONLY

Revision 2 - 11/02/2021



W. O. #: N/A

Project Name:

Prescott Rd Substation Breaker 1 2.4kV to 7.2kV Conversion and Reconductor

BHA Project No.: 2019S21B

Pole No.	Pole Hgt. & Class	Hot (H) or Cold	I R L	PRIMARY			SECONDARY		SERVICES		Primary Units (Pole Tops)	Transformer Units	Secondary Units	Service Units	R/W Units	Grounding Units	Guying Units	Anchor Units	Miscellaneous Units			
				Span	Primary Conductor	Neutral Conductor	Span	Conductor	Span	Conductor									a	b	c	
#7	40-3	H	R	169	3) D6CU						C1A	G10	2) J1	2) K2-4					3) DTIE-1	3) M5-1CU		
		H	R									C7	G2B24-120-15									
	40-3	H	I	169	2) D2ACSR	D2ACSR						B1	G11	J2	2) K2-4		M2-1			3) DTIE-1	3) M5-1A	M5-1X
		H	I									B7	G1B72-120-15									
		H	L																3) D2.4TH	3) D2.4DH	2) DRS8H	
#8	40-5	H	R	158	3) D6CU						C7		J1	2) K2-2								
	40-3	H	I	158	2) D2ACSR	D2ACSR						B1		J1	2) K2-2					3) DTIE-1		
		H	L																	3) D2.4DH	2) DRS8H	
#8-1	E) 45-3	H	R								2) A5-1	G11	J2	3) K2-2							2) M5-1A	
		H	R									G1B72-120-15										
	45-3	H	I	125	2) D2ACSR	D2ACSR						2) B7	G11	J2	3) K2-2		2) E1-2S			2) M5-5	2) DTIE-1	5) M5-1A
		H	I									2) A5-1	G1B72-120-15									M26-2LED
		C	I																2) FP-1	2) E-M		
	H	L																	2) D7.2DH	2) DRS6H	3) DRS8H	
#8-2	40-3	C	I	97	2) D2ACSR	D2ACSR					2) B7					M2-1	2) E1-2	2) FP-1	2) E-M	3) M5-1A	2) M5-5	

STAKING SHEET

FOR BIDDING PURPOSES ONLY

Revision 2 - 11/02/2021



W. O. #: N/A

Project Name:

Prescott Rd Substation Breaker 1 2.4kV to 7.2kV Conversion and Reconductor

BHA Project No.: 2019S21B

Pole No.	Pole Hgt. & Class	Hot (H) or Cold	I R L	PRIMARY			SECONDARY		SERVICES		Primary Units (Pole Tops)	Transformer Units	Secondary Units	Service Units	R/W Units	Grounding Units	Guying Units	Anchor Units	Miscellaneous Units		
				Span	Primary Conductor	Neutral Conductor	Span	Conductor	Span	Conductor									a	b	c
	40-3	H	I	142	2) D2ACSR	D2ACSR					B1	G11	J1	3) K2-2		M2-1			3) M5-1A	3) DTIE-1	M5-1X
		H	I								B7	G1B72-120-15	J2						J1	J8	2) M3-1
		H	I																2) M5-6B		
		H	L																3) DRS8H		
#7-2-1R	40-3	H	R	163	3) D6CU						C1A	G10	J2	5) K2-2						3) DTIE-1	
		H	R									G2B24-120-25	J1								
	40-3	H	I	163	2) D2ACSR	D2ACSR					B1	G11	J2	5) K2-2		M2-1				3) DTIE-1	M5-1X
		H	I									G1B72-120-25	J1								
		H	L																3) D2.4TH	5) DRS8H	
#7-2-2R	40-3	H	R	170	3) D6CU						C1A	J2	4) K2-2							3) DTIE-1	
		H	R									J1									
	40-3	H	I	170	2) D2ACSR	D2ACSR					B1	J2	4) K2-2		M2-1					3) DTIE-1	
		H	L									J1							3) D2.4TH	4) DRS8H	
#7-2-3R	40-3	H	R	135	3) D6CU						C1A	G10	J2	3) K2-2						3) DTIE-1	
		H	R									G2B24-120-25									
	40-3	H	I	135	2) D2ACSR	D2ACSR					B2	G11	J2	3) K2-2		M2-1	E1-2S			3) DTIE-1	M5-1X

STAKING SHEET

FOR BIDDING PURPOSES ONLY

Revision 2 - 11/02/2021



W. O. #: N/A

Project Name:

Prescott Rd Substation Breaker 1 2.4kV to 7.2kV Conversion and Reconductor

BHA Project No.: 2019S21B

Pole No.	Pole Hgt. & Class	Hot (H) or Cold	I R L	PRIMARY			SECONDARY		SERVICES		Primary Units (Pole Tops)	Transformer Units	Secondary Units	Service Units	R/W Units	Grounding Units	Guying Units	Anchor Units	Miscellaneous Units		
				Span	Primary Conductor	Neutral Conductor	Span	Conductor	Span	Conductor									a	b	c
#7-2-1L	40-5	H	R	97	3) D6CU						C1A	G20	J2	2) K2-2					3) DTIE-1		
*SEE SHEET 4 OF 11		H	R									G2B24-120-25		K3-2							
		H	R									G2B24-120-15									
	40-3	H	I	97	2) D2ACSR	D2ACSR					B1	G21	J2	2) K2-2		M2-1			3) DTIE-1	M5-1X	
		H	I									G2B72-120-25		K3-2							
(#7-2-1L)		H	I									G2B72-120-15									
		H	L																3) D2.4TH	2) DRS8H	DRS9H
#7-2-2L	40-3	H	R	67	3) D6CU						C1A									3) DTIE-1	
	40-3	H	I	67	2) D2ACSR	D2ACSR					B1					M2-1				3) DTIE-1	
		H	L																3) D2.4TH		
#7-2-3L	40-3	H	R	100	3) D6CU						C1A	G10	J2	4) K2-2						3) DTIE-1	
		H	R									G2B24-120-37									
	40-3	H	I	100	2) D2ACSR	D2ACSR					B1	G11	J2	4) K2-2		M2-1				3) DTIE-1	M5-1X
		H	I									G1B72-120-37									
		H	L																3) D2.4TH	4) DRS8H	
#7-2-4L	40-3	H	R	96	3) D6CU						C1A	G10	J2	3) K2-2						3) DTIE-1	



STAKING SHEET

FOR BIDDING PURPOSES ONLY

Revision 2 - 11/02/2021

W. O. #: N/A

Project Name:

Prescott Rd Substation Breaker 1 2.4kV to 7.2kV Conversion and Reconductor

BHA Project No.: 2019S21B

Pole No.	Pole Hgt. & Class	Hot (H) or Cold	I R L	PRIMARY			SECONDARY		SERVICES		Primary Units (Pole Tops)	Transformer Units	Secondary Units	Service Units	R/W Units	Grounding Units	Guying Units	Anchor Units	Miscellaneous Units			
				Span	Primary Conductor	Neutral Conductor	Span	Conductor	Span	Conductor									a	b	c	
#7-2-7L	40-3	H	R	157	3) D6CU						C1A	G10	J1	K2-2						3) DTIE-1		
		H	R									G2B24-120-50										
	40-3	H	I	157	2) D2ACSR	D2ACSR					B1	G11	J1	K2-2		M2-1				3) DTIE-1	M5-1X	
		H	I									G1B72-120-50										
		H	L																3) D2.4TH	DRS8H		
#7-2-8L	45-3	H	R	90	3) D6CU						C2A	G10	J2	3) K2-2			E1-2			3) DTIE-2		
		H	R									G2B24-120-25										
		C	R															FP-1				
#7-2-8L	45-3	H	I	90	2) D2ACSR	D2ACSR					B2		J2	3) K2-2		M2-1	E1-2S			M5-1X	3) DTIE-2	
		H	I									G11										
		H	I									G1B72-120-25										
		C	I															FP-1	E-M			
		H	L																3) D2.4AH	4) DRS-8H		
#7-2-9L	40-3	H	R	159	3) D6CU						C8						E1-2			3) M5-1CU		DTIE-1
*SEE DWG 7 OF 11		C	I															FP-1	E-M			
	40-3	H	I	159	2) D2ACSR	D2ACSR					B8					M2-1	E1-2				3) M5-1A	

STAKING SHEET

FOR BIDDING PURPOSES ONLY

Revision 2 - 11/02/2021



W. O. #: N/A

Project Name:

Prescott Rd Substation Breaker 1 2.4kV to 7.2kV Conversion and Reconductor

BHA Project No.: 2019S21B

Pole No.	Pole Hgt. & Class	Hot (H) or Cold	I R L	PRIMARY			SECONDARY		SERVICES		Primary Units (Pole Tops)	Transformer Units	Secondary Units	Service Units	R/W Units	Grounding Units	Guying Units	Anchor Units	Miscellaneous Units			
				Span	Primary Conductor	Neutral Conductor	Span	Conductor	Span	Conductor									a	b	c	
		C	I															FP-1	E-M			
		H	L																6) D2.4DH			
#9	40-3	H	R	20	3) D6CU						C1A									3) M5-1CU	4) DTIE-1	
		H	R								C7									M3-3		
	40-3	H	I	20	2) D2ACSR	D2ACSR					C1A				M2-1				2) M3-5A	5) DTIE-1	2) M5-6B	
		H	I								B7								3) M5-5	3) M5-1A		
		H	L																3) D2.4DH	3) D2.4TH		
#9-1	45-3	H	R	161	3) D6CU						C1A	J1	2) K2-2							3) DTIE-1		
	45-3	H	I	161	3) D2ACSR	D2ACSR					C1A	J1	2) K2-2		M2-1						4) DTIE-1	
		H	L																3) D2.4TH			
#9-2	45-3	H	R	139	3) D6CU						C1A	G10	J1	K2-2						3) DTIE-1	UM5-1	
		H	R									G2B24-120-25										
	45-3	H	I	139	3) D2ACSR	D2ACSR					C1A	G11	J1	K2-2		M2-1				UM5-1	4) DTIE-1	M5-1X
		H	I									G1B72-120-25										
		H	L																3) D2.4TH	2) DRS8H		

STAKING SHEET

FOR BIDDING PURPOSES ONLY

Revision 2 - 11/02/2021



W. O. #: **N/A**

Project Name:

Prescott Rd Substation Breaker 1 2.4kV to 7.2kV Conversion and Reconductor

BHA Project No.: **2019S21B**

Pole No.	Pole Hgt. & Class	Hot (H) or Cold	I R L	PRIMARY			SECONDARY		SERVICES		Primary Units (Pole Tops)	Transformer Units	Secondary Units	Service Units	R/W Units	Grounding Units	Guying Units	Anchor Units	Miscellaneous Units				
				Span	Primary Conductor	Neutral Conductor	Span	Conductor	Span	Conductor									a	b	c		
		H	R								B7												
	40-3	H	I	153	3) D2ACSR	D2ACSR					C1A	J2	3) K2-2		M2-1						4) DTIE-1		
		H	I								B7	J1								3) M5-1A			
		H	L																	3) D2.4TH	2) DRJMPR	3) DRS8H	
		H	L																	2) D2.4DH			
#20-1	E) 40-3	H	R									G10											
		H	R									G2B24-120-25											
		H	I	14		D2ACSR						G11									J8	M5-1A	J1
		H	I									G2B72-120-25									M5-1X		
#21	40-3	H	R	142	3) D6CU						C1A	G10	J2	2) K2-2							3) DTIE-1		
		H	R									G2B24-120-25											
	40-3	H	I	142	3) D2ACSR	D2ACSR					C1A	G11	J2	2) K2-2		M2-1					4) DTIE-1	M5-1X	
		H	I									G2B72-120-25											
		H	L																		3) D2.4TH	2) DRS8H	
#22	40-3	H	R	225	3) D6CU						C1A	G10	J2	4) K2-2							3) DTIE-1		
		H	R									G2B24-120-37											

STAKING SHEET

FOR BIDDING PURPOSES ONLY

Revision 2 - 11/02/2021



W. O. #: N/A

Project Name:

Prescott Rd Substation Breaker 1 2.4kV to 7.2kV Conversion and Reconductor

BHA Project No.: 2019S21B

Pole No.	Pole Hgt. & Class	Hot (H) or Cold	I R L	PRIMARY			SECONDARY		SERVICES		Primary Units (Pole Tops)	Transformer Units	Secondary Units	Service Units	R/W Units	Grounding Units	Guying Units	Anchor Units	Miscellaneous Units			
				Span	Primary Conductor	Neutral Conductor	Span	Conductor	Span	Conductor									a	b	c	
	40-3	H	I	225	3) D2ACSR	D2ACSR					C1A	G11	J2	4) K2-2		M2-1				4) DTIE-1	M5-1X	
		H	I									G2B72-120-37										
		H	L																	3) D2.4TH	4) DRS8H	
#23	40-3	H	R	149	3) D6CU						C1A		J2	3) K2-2						3) DTIE-1		
	40-3	H	I	149	3) D2ACSR	D2ACSR					C1A		J2	3) K2-2		M2-1					4) DTIE-1	
		H	L																	3) D2.4TH		
#24	40-3	H	R	199	3) D6CU						C1A	G10	J2	4) K2-2						3) DTIE-1		
		H	R									G2B24-120-37	J1									
	40-3	H	I	199	3) D2ACSR	D2ACSR					C1A	G11	J2	4) K2-2		M2-1					4) DTIE-1	M5-1X
		H	I									G1B72-120-37	J1									
		H	L																	3) D2.4TH	4) DRS8H	
#25	40-3	H	R	131	3) D6CU						C1A	G10	J2	3) K2-2						3) DTIE-1	3) M5-1CU	
		H	R								C7	G2B24-120-15										
	40-3	H	I	131	3) D2ACSR	D2ACSR					C1A	G11	J2	3) K2-2		M2-1	E1-2S			4) DTIE-1	3) M5-1A	M5-1X
		H	I								B7	G1B72-120-15								2) M5-6B	2) M3-1	
		C	I														FP-1		E-M			

STAKING SHEET

FOR BIDDING PURPOSES ONLY

Revision 2 - 11/02/2021



W. O. #: N/A

Project Name:

Prescott Rd Substation Breaker 1 2.4kV to 7.2kV Conversion and Reconductor

BHA Project No.: 2019S21B

Pole No.	Pole Hgt. & Class	Hot (H) or Cold	I R L	PRIMARY			SECONDARY		SERVICES		Primary Units (Pole Tops)	Transformer Units	Secondary Units	Service Units	R/W Units	Grounding Units	Guying Units	Anchor Units	Miscellaneous Units		
				Span	Primary Conductor	Neutral Conductor	Span	Conductor	Span	Conductor									a	b	c
		H	L																3) D2.4TH	3) D2.4DH	3) DRS8H
#26	40-3	H	R	157	3) D6CU					C1A	G10	2) J1	3) K2-2						3) DTIE-1		
		H	R								G2B24-120-25										
	40-3	H	I	157	3) D2ACSR	D2ACSR				C1A	G11	2) J1	3) K2-2		M2-1				4) DTIE-1	M5-1X	
		H	I								G1B72-120-25										
		H	L																3) D2.4TH	3) DRS8H	
#27	40-3	H	R	135	3) D6CU					C8		J2	3) K2-2			E1-2			3) DTIE-1	3) M5-1CU	
		H	R										K1								
		C	R														FP-1				
	40-3	H	I	135	3) D2ACSR	D2ACSR				C8		J2	3) K2-2		M2-1	E1-4S			3) DTIE-1	4) M5-1A	
		H	I										K1								
		C	I															FP-3	E-M		
		H	L																6) D2.4DH	4) DRS8H	
#28	E) 45-3	H	R	35	3) D6CU					C7											3) M5-1CU
		H	I	35	3) D2ACSR	D2ACSR				C7											4) M5-1A
		H	I																J1		



STAKING SHEET

FOR BIDDING PURPOSES ONLY

Revision 2 - 11/02/2021

W. O. #: N/A

Project Name:

Prescott Rd Substation Breaker 1 2.4kV to 7.2kV Conversion and Reconductor

BHA Project No.: 2019S21B

Pole No.	Pole Hgt. & Class	Hot (H) or Cold	I R L	PRIMARY			SECONDARY		SERVICES		Primary Units (Pole Tops)	Transformer Units	Secondary Units	Service Units	R/W Units	Grounding Units	Guying Units	Anchor Units	Miscellaneous Units		
				Span	Primary Conductor	Neutral Conductor	Span	Conductor	Span	Conductor									a	b	c
		H	L																3) D2.4DH		
(#25)																					
#25-1	40-3	H	R	82	3) D6CU					C2A		J1	2) K2-2							3) DTIE-2	
	40-3	H	I	82	2) D2ACSR	D2ACSR				B2		J1	2) K2-2		M2-1	E1-2				3) DTIE-2	
		C	I														FP-1	E-M			
		H	L															3) D2.4AH	2) DRS8H		
#25-2	40-3	H	R	106	3) D6CU					C8	G20	J2	2) K2-2								3) M3-5A
		H	R								G2B24-120-37	J1	K1						3) DTIE-2	3) M5-1CU	
		H	R								G2B24-120-15										
	40-3	H	I	106	2) D2ACSR	D2ACSR				B1	G21	J2	2) K2-2		M2-1				2) M3-5A	2) M5-6B	3) DTIE-1
		H	I								G2B72-120-37	J1	K1						2) M5-1X		
		H	I								G2B72-120-15										
		H	L																6) D2.4DH	2) DRS8H	DRS9H
#25-3	40-3	H	R	158	3) D6CU					C2A	G10	J2	2) K2-2		M2-1					3) DTIE-2	
		H	R								G2B24-120-25		K1								
	40-3	H	I	158	2) D2ACSR	D2ACSR				B8	G11	J2	2) K2-2		M2-1	E1-2S				2) DTIE-2	3) M5-1A



STAKING SHEET

FOR BIDDING PURPOSES ONLY

Revision 2 - 11/02/2021

W. O. #: N/A

Project Name:

Prescott Rd Substation Breaker 1 2.4kV to 7.2kV Conversion and Reconductor

BHA Project No.: 2019S21B

Pole No.	Pole Hgt. & Class	Hot (H) or Cold	I R L	PRIMARY			SECONDARY		SERVICES		Primary Units (Pole Tops)	Transformer Units	Secondary Units	Service Units	R/W Units	Grounding Units	Guying Units	Anchor Units	Miscellaneous Units			
				Span	Primary Conductor	Neutral Conductor	Span	Conductor	Span	Conductor									a	b	c	
		H	I								G1B72-120-25		K1									
		C	I														FP-1	E-M				
		H	L															3) D2.4AH	3) DRS8H			
#25-4	40-3	H	R		3) 67 D6CU					C1A	G10	J2	2) K2-2								3) DTIE-1	
		H	R								G2B24-120-25											
	40-3	H	I		2) 67 D2ACSR	D2ACSR				B1	G11	J2	2) K2-2		M2-1						3) DTIE-1	M5-1X
		H	I								G1B72-120-25											
		H	L															3) D2.4TH	2) DRS8H			
#25-5	40-3	H	R		3) 100 D6CU					C1A	G10	J2	3) K2-2								3) DTIE-1	
		H	R								G2B24-120-25											
	40-3	H	I		2) 100 D2ACSR	D2ACSR				B2	G11	J2	3) K2-2		M2-1	E1-2S					3) DTIE-2	M5-1X
		H	I								G1B72-120-25											
		C	I														FP-1	E-M				
		H	L															3) D2.4TH	3) DRS8H			
#25-6	40-3	H	R		3) 160 D6CU					C1A	G10	J2	4) K2-2								3) DTIE-1	
		H	R								G2B24-120-37											

STAKING SHEET

FOR BIDDING PURPOSES ONLY

Revision 2 - 11/02/2021



W. O. #: N/A

Project Name:

Prescott Rd Substation Breaker 1 2.4kV to 7.2kV Conversion and Reconductor

BHA Project No.: 2019S21B

Pole No.	Pole Hgt. & Class	Hot (H) or Cold	I R L	PRIMARY			SECONDARY		SERVICES		Primary Units (Pole Tops)	Transformer Units	Secondary Units	Service Units	R/W Units	Grounding Units	Guying Units	Anchor Units	Miscellaneous Units			
				Span	Primary Conductor	Neutral Conductor	Span	Conductor	Span	Conductor									a	b	c	
	40-3	H	I	160	2) D2ACSR	D2ACSR					B1	G11	J2	4) K2-2		M2-1				3) DTIE-1	M5-1X	
		H	I									G1B72-120-37										
		H	L																	3) D2.4TH	4) DRS8H	
#25-7	40-3	H	R	179	3) D6CU						C1A	G10	J2	4) K2-2							3) DTIE-1	
		H	R									G2B24-120-37										
	40-3	H	I	179	2) D2ACSR	D2ACSR					B1	G11	J2	4) K2-2		M2-1					3) DTIE-1	M5-1X
		H	I									G1B72-120-37										
		H	L																	3) D2.4TH	4) DRS8H	
#25-8	40-3	H	R	92	3) D6CU						C1A	G10	J2	3) K2-2							3) DTIE-1	
		H	R									G2B24-120-37										
	40-3	H	I	92	2) D2ACSR	D2ACSR					B1	G11	J2	3) K2-2		M2-1					3) DTIE-1	M5-1X
		H	I									G1B72-120-37										
		H	L																	3) D2.4TH	3) DRS8H	
#25-9	40-3	H	R	184	3) D6CU						C1A		J2	5) K2-2							3) DTIE-1	
		H	R										J1									
	40-3	H	I	184	2) D2ACSR	D2ACSR					B1		J2	5) K2-2		M2-1					3) DTIE-1	

STAKING SHEET

FOR BIDDING PURPOSES ONLY

Revision 2 - 11/02/2021



W. O. #: N/A

Project Name:

Prescott Rd Substation Breaker 1 2.4kV to 7.2kV Conversion and Reconductor

BHA Project No.: 2019S21B

Pole No.	Pole Hgt. & Class	Hot (H) or Cold	I R L	PRIMARY			SECONDARY		SERVICES		Primary Units (Pole Tops)	Transformer Units	Secondary Units	Service Units	R/W Units	Grounding Units	Guying Units	Anchor Units	Miscellaneous Units		
				Span	Primary Conductor	Neutral Conductor	Span	Conductor	Span	Conductor									a	b	c
#29	E) 40-3	H	R								E) C1	G10	J2	4) K2-2					3) M5-1A		
		H	R								C7	G2B24-120-25									
		H	I									G11	J2	4) K2-2		M2-1			4) DTIE-1	2) DTIE-2	3) M5-1A
		H	I								C7	G1B72-120-25									3) M5-1X
#29-1	40-5	H	R	32	3) D2CU						C8		J2	3) K2-2					3) M3-5A	3) DTIE-1	
#29-1	40-3	H	I	32	2) D2ACSR	D2ACSR					B8		J1	3) K2-2		M2-1			2) M3-5A	2) M5-6B	3) M5-1A
		H	I										J2						2) DTIE-2		
		H	L																6) D2.4DH	3) DRS8H	
#29-2	40-3	H	R	140	3) D2CU						C1A	G10	J1	2) K2-2					3) DTIE-1		
		H	R									G2B24-120-15									
	40-3	H	I	140	2) D2ACSR	D2ACSR					B1	G11	J1	2) K2-2		M2-1			3) DTIE-1	M5-1X	
		H	I									G1B72-120-25									
		H	L																6) D2.4DH	2) DRS8H	
#29-3	40-3	H	R	154	3) D2CU						C1A	G10	J1	2) K2-2					3) DTIE-1	UM5-3	
		H	R									G2B24-120-15									
	40-3	H	I	154	2) D2ACSR	D2ACSR					B1	G11	J1	2) K2-2		M2-1			UM5-3	3) DTIE-1	M5-1X



STAKING SHEET

FOR BIDDING PURPOSES ONLY

Revision 2 - 11/02/2021

W. O. #: N/A

Project Name:

Prescott Rd Substation Breaker 1 2.4kV to 7.2kV Conversion and Reconductor

BHA Project No.: 2019S21B

Pole No.	Pole Hgt. & Class	Hot (H) or Cold	I R L	PRIMARY			SECONDARY		SERVICES		Primary Units (Pole Tops)	Transformer Units	Secondary Units	Service Units	R/W Units	Grounding Units	Guying Units	Anchor Units	Miscellaneous Units			
				Span	Primary Conductor	Neutral Conductor	Span	Conductor	Span	Conductor									a	b	c	
		H	I								G1B72-120-15		K2-4/0									
		H	L															3)	3)			
#29-4	40-5	H	R	151	3) D2CU					C1A	G10	J1	2) K2-2					3)				
		H	R								G2B24-120-15											
	40-3	H	I	151	2) D2ACSR	D2ACSR				B1	G11	J1	2) K2-2		M2-1			3)				
		H	I								G1B72-120-15											M5-1X
		H	L															3)				2) DRS8H
#29-5	40-3	H	R	149	3) D2CU					C1A	G10	J1	3) K2-2					3)				
		H	R								G2B24-120-15											
	40-3	H	I	149	2) D2ACSR	D2ACSR				B1	G11	J1	2) K2-2		M2-1			3)				M5-1X
		H	I								G1B72-120-15											
		H	L															3)				2) DRS8H
#29-6	40-3	H	R	84	3) D2CU		84	D2TPX		C1A		J1	K1					M26-2				3) DTIE-1
		H	R																			
	40-3	H	I	84	2) D2ACSR	D2ACSR				B1		J1	K1		M2-1			3)				M26-2LED
		H	L															3)				2) DRS8H



STAKING SHEET

FOR BIDDING PURPOSES ONLY

Revision 2 - 11/02/2021

W. O. #: N/A

Project Name:

Prescott Rd Substation Breaker 1 2.4kV to 7.2kV Conversion and Reconductor

BHA Project No.: 2019S21B

Pole No.	Pole Hgt. & Class	Hot (H) or Cold	I R L	PRIMARY			SECONDARY		SERVICES		Primary Units (Pole Tops)	Transformer Units	Secondary Units	Service Units	R/W Units	Grounding Units	Guying Units	Anchor Units	Miscellaneous Units			
				Span	Primary Conductor	Neutral Conductor	Span	Conductor	Span	Conductor									a	b	c	
#29-7	40-5	H	R	43	3) D2CU						C1A									3) DTIE-1		
	40-3	H	I	43	2) D2ACSR	D2ACSR	43	D6DPX			B1	G11	J1	K2-2		M2-1				3) DTIE-1	M5-1X	
		H	I									G1B72-120-15		K1								
		H	L																	3) D2.4TH	2) DRS8H	
#29-8	40-3	H	R	148	3) D2CU						C1A	G10	J1	2) K2-2						3) DTIE-1		
		H	R									G2B24-120-15										
#29-8	40-3	H	I	148	2) D2ACSR	D2ACSR					B1	G11	J1	2) K2-2		M2-1				3) DTIE-1	M5-1X	
		H	I									G1B72-120-15										
		H	L																	3) D2.4TH	2) DRS8H	
#29-9	40-3	H	R	162	3) D2CU						C1A	G10	J1	2) K2-2						3) DTIE-1	UM5-3	
*SEE DWG 10-11		H	R									G2B24-120-15										
	40-3	H	I	162	2) D2ACSR	D2ACSR					B1	G11	J1	2) K2-2		M2-1				3) DTIE-1	UM5-3	M5-1X
		H	I									G1B72-120-15										
		H	L																	3) D2.4TH	3) DRS8H	
#29-10	40-3	H	R	181	3) D2CU						C1A	G10	J1	2) K2-2						3) DTIE-1		



STAKING SHEET

FOR BIDDING PURPOSES ONLY

Revision 2 - 11/02/2021

W. O. #: **N/A**

Project Name:

Prescott Rd Substation Breaker 1 2.4kV to 7.2kV Conversion and Reconductor

BHA Project No.: **2019S21B**

Pole No.	Pole Hgt. & Class	Hot (H) or Cold	I R L	PRIMARY			SECONDARY		SERVICES		Primary Units (Pole Tops)	Transformer Units	Secondary Units	Service Units	R/W Units	Grounding Units	Guying Units	Anchor Units	Miscellaneous Units		
				Span	Primary Conductor	Neutral Conductor	Span	Conductor	Span	Conductor									a	b	c
		H	L															3) D2.4DH	3) DRS8H		
#29-13	40-3	H	R	169	3) D2CU					C1A	G20	J2	K2-2					M26-2	3) DTIE-1		
		H	R								2) G2B24-120-15		K3-1/0								
	40-3	H	I	169	2) D2ACSR	D2ACSR				B1	G21	J2	K2-2		M2-1			3) DTIE-1	M26-2LED	2) M5-1X	
		H	I								2) G2B72-120-15		K3-1/0								
		H	L															3) D2.4TH	2) DRS8H	DRS9H	
#29-14	40-3	H	R	160	3) D2CU					C1A		J1	2) K3-1/0					3) DTIE-1	SR-3		
	40-3	H	I	160	2) D2ACSR	D2ACSR				B1		J1	2) K3-1/0		M2-1			3) DTIE-1			
		H	L															3) D2.4TH	2) DRS9H		
#29-15	40-5	H	R	89	3) D2CU					C1A	G20	J1	2) K3-1/0					3) DTIE-1		M26-2	
		H	R								G2B24-120-25										
		H	R								G2B24-120-10										
	40-3	H	I	89	2) D2ACSR	D2ACSR				B1	G21	J2	2) K3-1/0		M2-1			3) DTIE-1	M26-2LED	2) M5-1X	
		H	I								G2B72-120-25										
		H	I								G2B72-120-10										
		H	L															3) D2.4TH	2) DRS9H		



STAKING SHEET

FOR BIDDING PURPOSES ONLY

Revision 2 - 11/02/2021

W. O. #: N/A

Project Name:

Prescott Rd Substation Breaker 1 2.4kV to 7.2kV Conversion and Reconductor

BHA Project No.: 2019S21B

Pole No.	Pole Hgt. & Class	Hot (H) or Cold	I R L	PRIMARY			SECONDARY		SERVICES		Primary Units (Pole Tops)	Transformer Units	Secondary Units	Service Units	R/W Units	Grounding Units	Guying Units	Anchor Units	Miscellaneous Units			
				Span	Primary Conductor	Neutral Conductor	Span	Conductor	Span	Conductor									a	b	c	
#29-16	40-5	H	R	44	3) D2CU						C1A								3) DTIE-1			
	40-3	H	I	44	2) D2ACSR	D2ACSR					B1				M2-1				3) DTIE-1			
			H	L																3) D2.4TH		
#29-17	40-5	H	R	196	3) D2CU						C1A	G20	J2	2) K3-2		E1-2S			3) DTIE-1	UM5-2		
			H	R								G2B24-120-25		K2-2								
			H	R								G2B24-120-10										
			C	R														FP-1				
		40-3	H	I	196	2) D2ACSR	D2ACSR					B1	G21	J2	2) K3-2		M2-1	E1-2S		3) DTIE-1	UM5-2	2) M5-1X
			H	I									G2B72-120-37		K2-4							
			H	I									G2B72-120-15									
#29-18			H	L															3) D2.4TH	2) DRS8H	2) DRS9H	
			C	I														FP-1	E-M			
		40-3	H	R	89	3) D2CU						C1A		J1	2) K3-2		2) E1-2S		3) DTIE-1			
			C	R														FP-1				
	40-3	H	I	89	2) D2ACSR	D2ACSR					B2		J1	2) K3-2		M2-1	2) E1-2S		3) DTIE-2			
			C	I														FP-1	E-M			

STAKING SHEET

FOR BIDDING PURPOSES ONLY

Revision 2 - 11/02/2021



W. O. #: N/A

Project Name:

Prescott Rd Substation Breaker 1 2.4kV to 7.2kV Conversion and Reconductor

BHA Project No.: 2019S21B

Pole No.	Pole Hgt. & Class	Hot (H) or Cold	I R L	PRIMARY			SECONDARY		SERVICES		Primary Units (Pole Tops)	Transformer Units	Secondary Units	Service Units	R/W Units	Grounding Units	Guying Units	Anchor Units	Miscellaneous Units		
				Span	Primary Conductor	Neutral Conductor	Span	Conductor	Span	Conductor									a	b	c
		H	L																3) D2.4TH	2) DRS9H	
#29-19	40-3	H	R	71	3) D2CU					C1A		J1	2) K3-2			E1-2S			3) DTIE-1		
		H	R														FP-1				
	40-3	H	I	71	2) D2ACSR	D2ACSR				B2		J1	2) K3-2		M2-1	E1-2			3) DTIE-2		
		C	I														FP-1		E-M		
		H	L																2) DRS9H		
#29-20	40-5	H	R	167	3) D2CU					C1A	G20	J2	2) K3-2						3) DTIE-1		
		H	R								G2B24-120-50		2) K2-2								
		H	R								G2B24-120-15		K1								
	40-3	H	I	167	2) D2ACSR	D2ACSR				B1	G21	J2	2) K3-2		M2-1				3) DTIE-1	2) M5-1X	
		H	I								G1B72-120-50		2) K2-2								
		H	I								G1B72-120-15		K1								
		H	L																3) D2.4TH	3) DRS8H	2) DRS9H
#29-21	40-5	H	R	199	3) D2CU					C1A		J1	K3-2						3) DTIE-1		
	40-3	H	I	199	2) D2ACSR	D2ACSR				B1		J1	K3-2		M2-1				3) DTIE-1		
		H	L																3) D2.4TH	2) DRS9H	

STAKING SHEET

FOR BIDDING PURPOSES ONLY

Revision 2 - 11/02/2021



W. O. #: N/A

Project Name:

Prescott Rd Substation Breaker 1 2.4kV to 7.2kV Conversion and Reconductor

BHA Project No.: 2019S21B

Pole No.	Pole Hgt. & Class	Hot (H) or Cold	I R L	PRIMARY			SECONDARY		SERVICES		Primary Units (Pole Tops)	Transformer Units	Secondary Units	Service Units	R/W Units	Grounding Units	Guying Units	Anchor Units	Miscellaneous Units		
				Span	Primary Conductor	Neutral Conductor	Span	Conductor	Span	Conductor									a	b	c
#29-22	40-3	H	R	112	3) D2CU						C1A		J1	K3-1/0					3) DTIE-1		
	40-3	H	I	112	2) D2ACSR	D2ACSR					B1		J1	K3-1/0	M2-1				3) DTIE-1		
		H	L																3) D2.4TH	2) DRS9H	
#29-23	40-3	H	R	81	3) D2CU						C1A	G31	J2	2) K3-1/0		E1-2S			3) DTIE-1	2) M5-4	
		H	R									G2B24-120-50		K2-2							
		H	R									2) G2B24-120-15									
		C	R															FP-1			
	40-3	H	I	81	2) D2ACSR	D2ACSR					B1	G21	J2	2) K3-1/0		M2-1	E1-2S		3) DTIE-1		2) M5-1X
		H	I									G1B72-120-50		K2-2							
		H	I									G1B72-120-15									
		C	I															FP-1	E-M		
		H	L																3) D2.4TH	2) DRS9H	DRS8H
#29-24	40-5	H	R	153	3) D2CU						C7					E2-2					
		H	L																3) D2.4DH		
(#29-23)																					



STAKING SHEET

FOR BIDDING PURPOSES ONLY

Revision 2 - 11/02/2021

W. O. #: N/A

Project Name:

Prescott Rd Substation Breaker 1 2.4kV to 7.2kV Conversion and Reconductor

BHA Project No.: 2019S21B

Pole No.	Pole Hgt. & Class	Hot (H) or Cold	I R L	PRIMARY			SECONDARY		SERVICES		Primary Units (Pole Tops)	Transformer Units	Secondary Units	Service Units	R/W Units	Grounding Units	Guying Units	Anchor Units	Miscellaneous Units		
				Span	Primary Conductor	Neutral Conductor	Span	Conductor	Span	Conductor									a	b	c
#29-25	45-3	H	I	189	2) D2ACSR	D2ACSR					2) C7					M2-1	2) E1-2S		7) M5-1A	4) M5-5	4) DTIE-1
		H	I																2) M3-5A	2) M5-6B	2) M5-8
		H	I																		
		C	I														2) FP-1		J8		
(#29-25-2)																					
#29-25-1	40-5	H	R	122	3) D6CU	D6CU					C8						E1-2S		6) DTIE-1		
		C	R															FP-1			
		H	L																6) D7.2DH		
(#29-25)																					
#29-25-2	40-5	H	R								C1A		J1	K2-2					4) DTIE-1	M26-1	4) M5-1CU
		H	R											K10							
	40-3	H	I	164	3) D2ACSR	D2ACSR					C8		J1	K2-2		M2-1			4) M5-1A	3) DTIE-2	M26-1
		H	I											K10							
		H	L																3) D2.4TH	2) DRS8H	
(#29-25)																					
#29-26	E) 45-3	H	R	57	3) D6CU	D6CU					C8								3) DTIE-2	4) M5-1CU	

STAKING SHEET

FOR BIDDING PURPOSES ONLY

Revision 2 - 11/02/2021



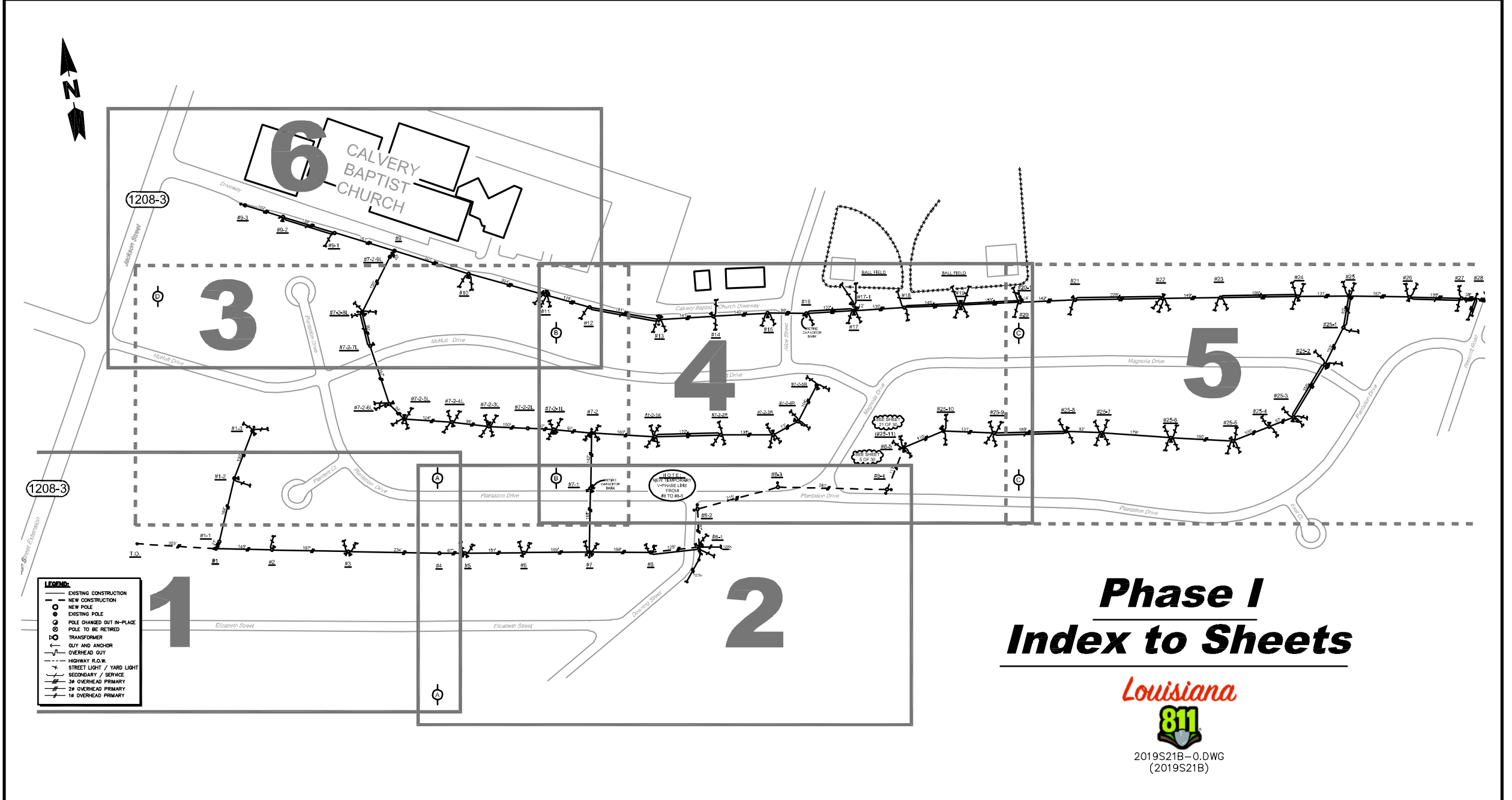
W. O. #: N/A

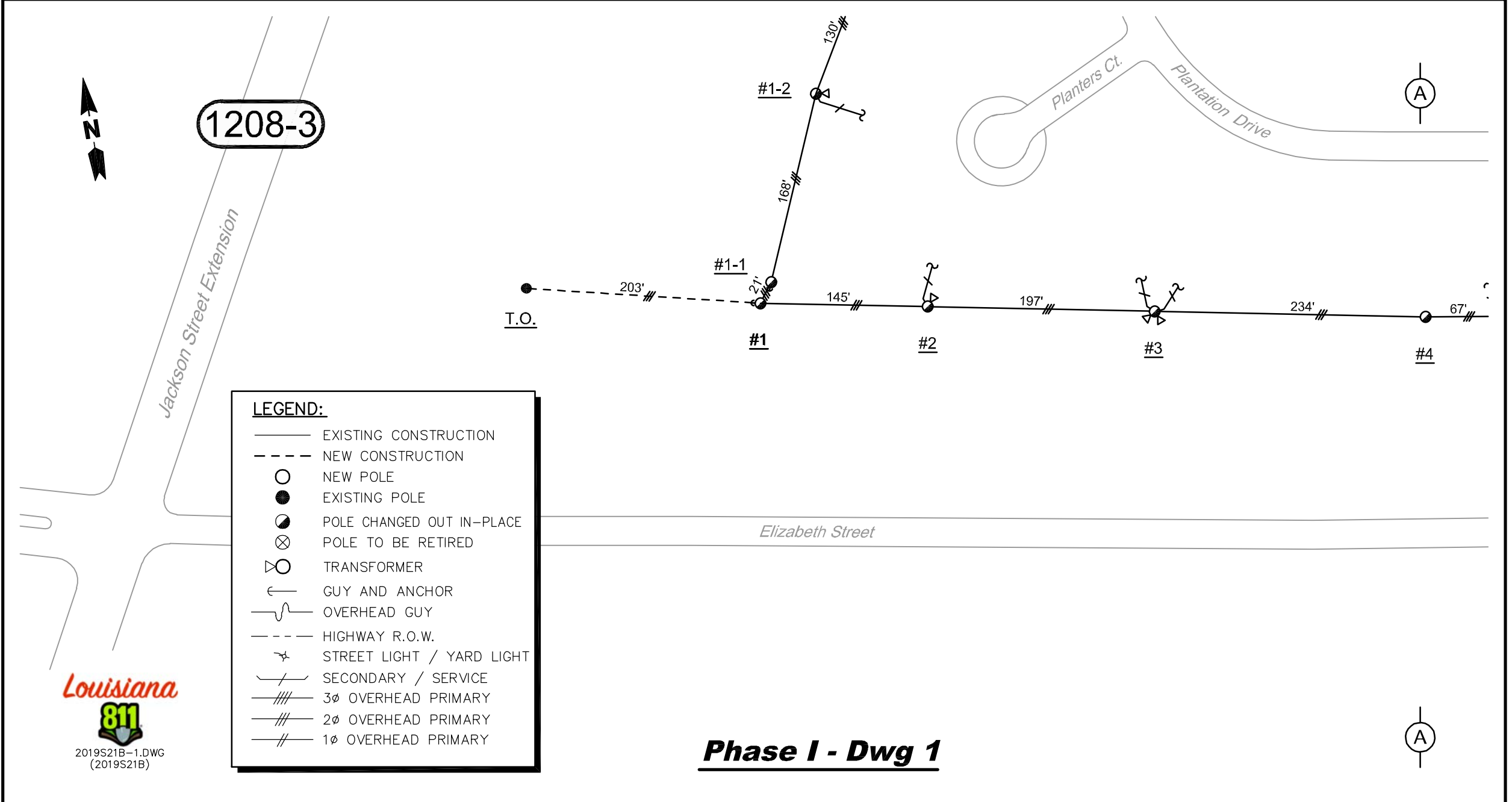
Project Name:

**Prescott Rd Substation Breaker 1
2.4kV to 7.2kV Conversion and Reconductor**

BHA Project No.: 2019S21B

Pole No.	Pole Hgt. & Class	Hot (H) or Cold	I R L	PRIMARY			SECONDARY		SERVICES		Primary Units (Pole Tops)	Transformer Units	Secondary Units	Service Units	R/W Units	Grounding Units	Guying Units	Anchor Units	Miscellaneous Units		
				Span	Primary Conductor	Neutral Conductor	Span	Conductor	Span	Conductor									a	b	c
		H	I	37	3) D2ACSR	D2ACSR					C8								3) DTIE-2	4) M5-1A	



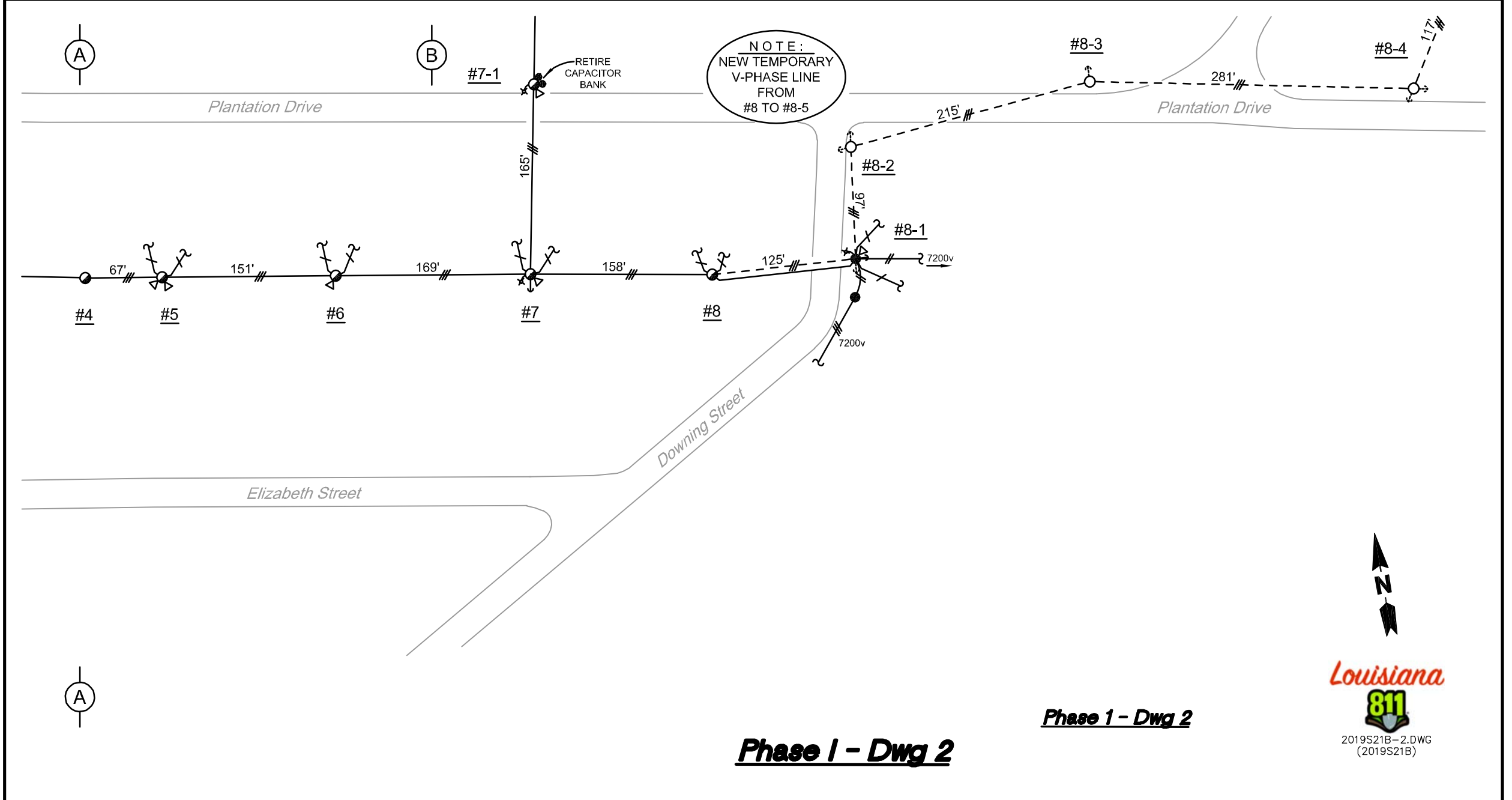


LEGEND:

- EXISTING CONSTRUCTION
- - - NEW CONSTRUCTION
- NEW POLE
- EXISTING POLE
- ◐ POLE CHANGED OUT IN-PLACE
- ⊗ POLE TO BE RETIRED
- ⊕ TRANSFORMER
- └ GUY AND ANCHOR
- ~ OVERHEAD GUY
- - - HIGHWAY R.O.W.
- ★ STREET LIGHT / YARD LIGHT
- └ SECONDARY / SERVICE
- ≡≡≡ 3φ OVERHEAD PRIMARY
- ≡≡ 2φ OVERHEAD PRIMARY
- ≡ 1φ OVERHEAD PRIMARY

Louisiana
811
2019S21B-1.DWG
(2019S21B)

Phase I - Dwg 1

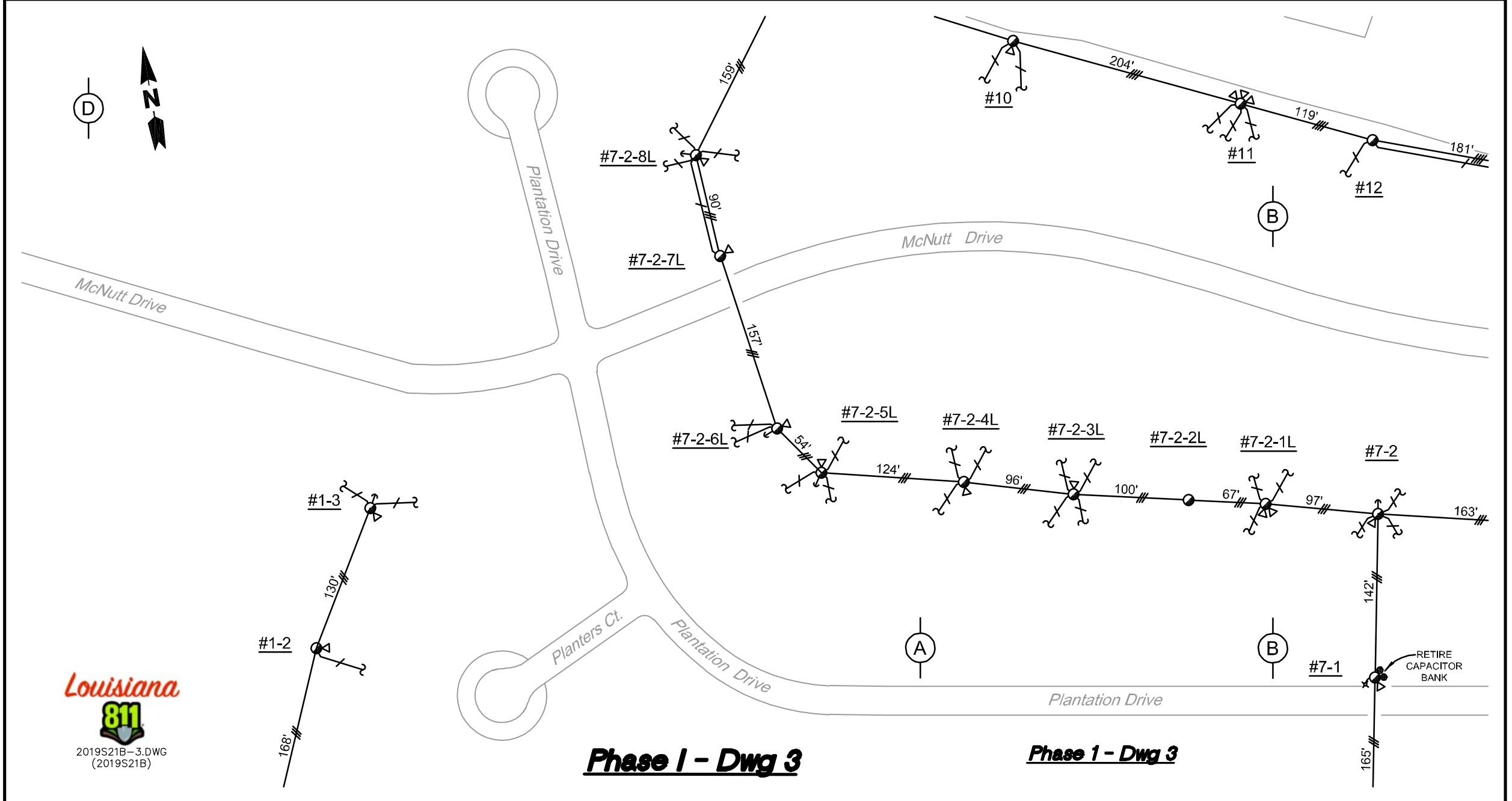


Phase 1 - Dwg 2

Phase 1 - Dwg 2



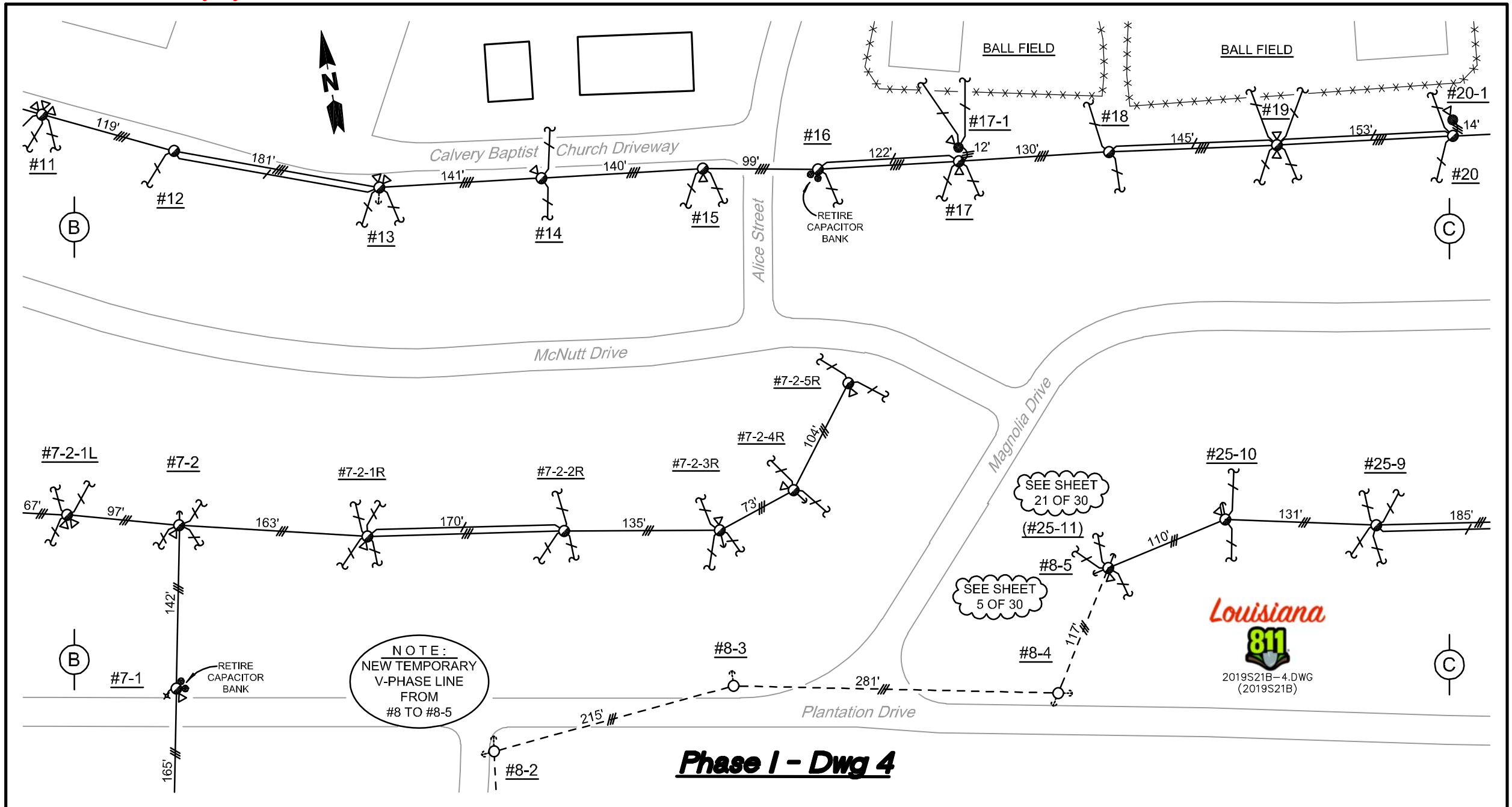
2019S21B-2.DWG
 (2019S21B)



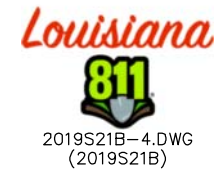
2019S21B-3.DWG
(2019S21B)

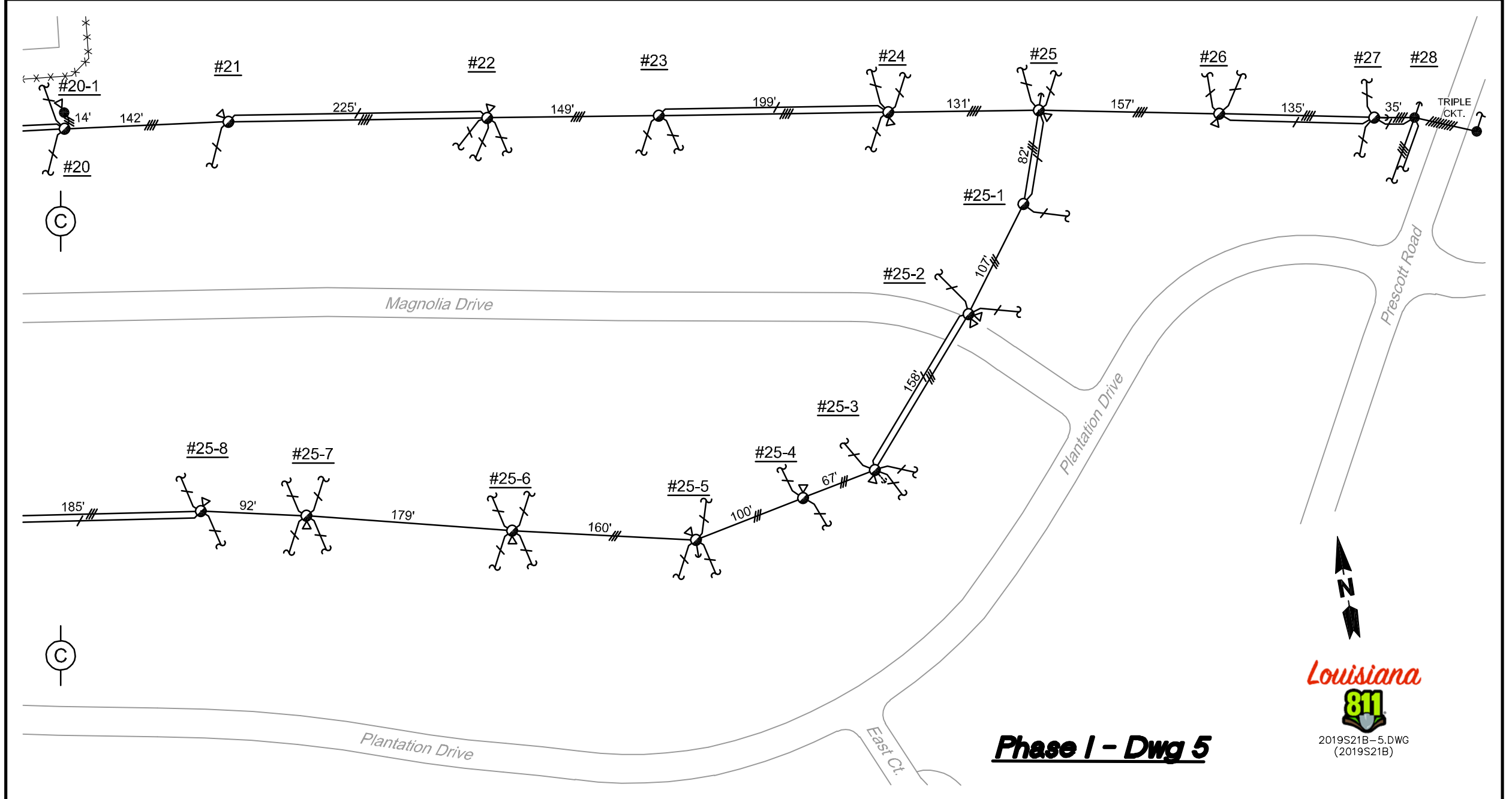
Phase 1 - Dwg 3

Phase 1 - Dwg 3



Phase I - Dwg 4

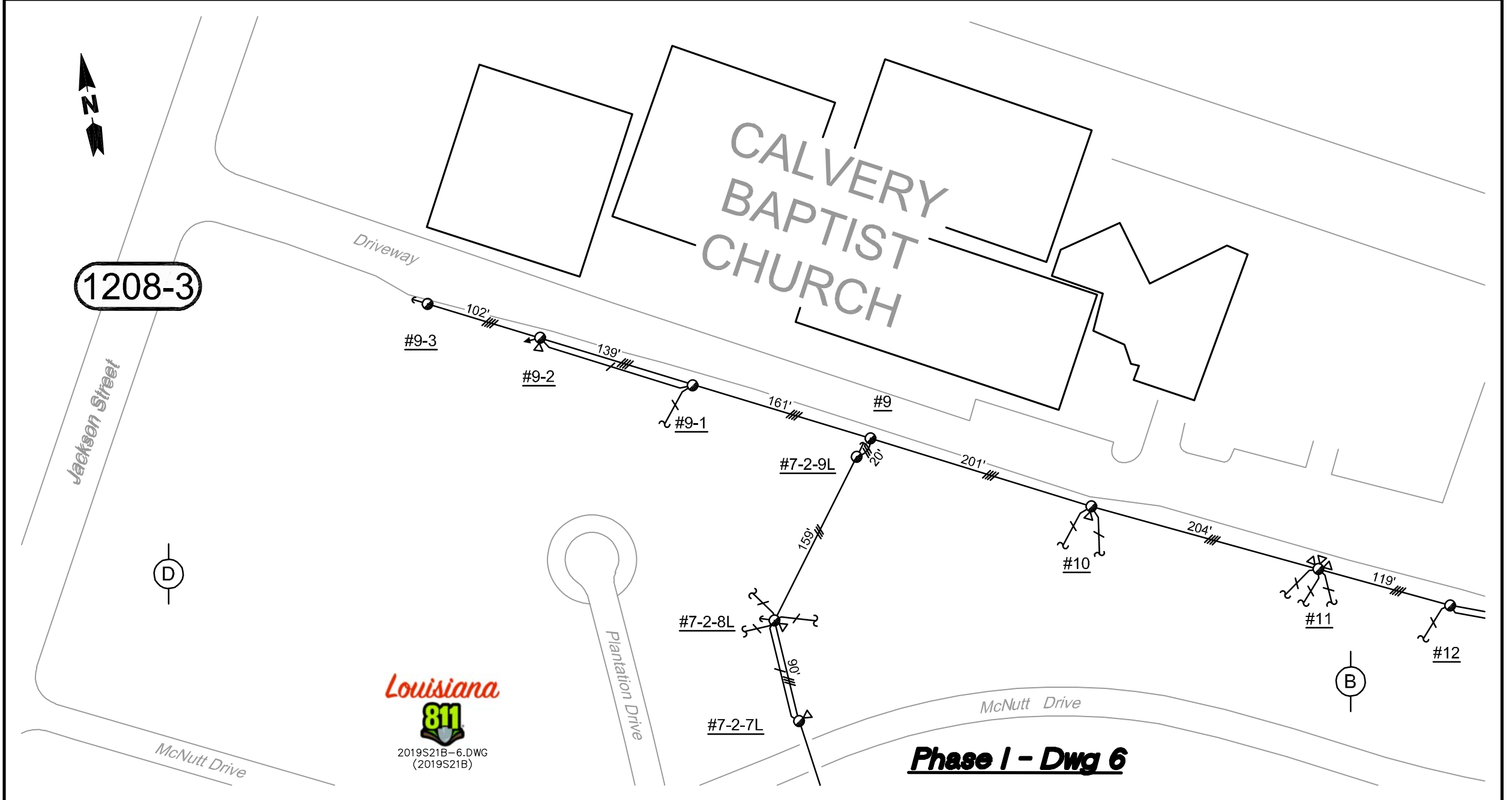




Phase I - Dwg 5

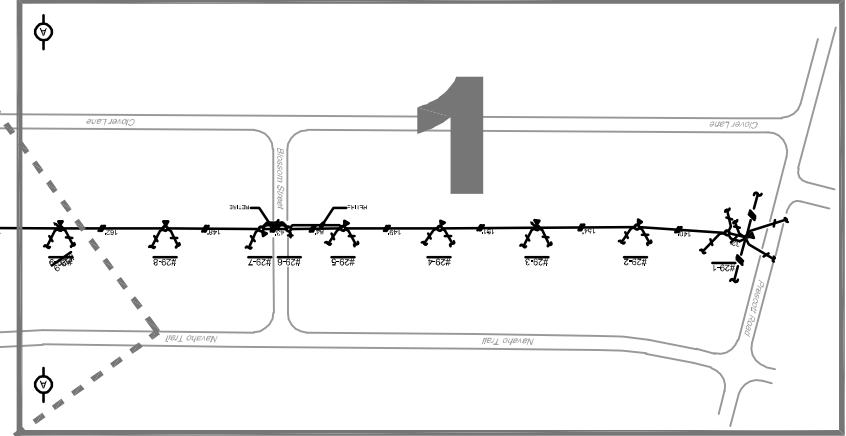
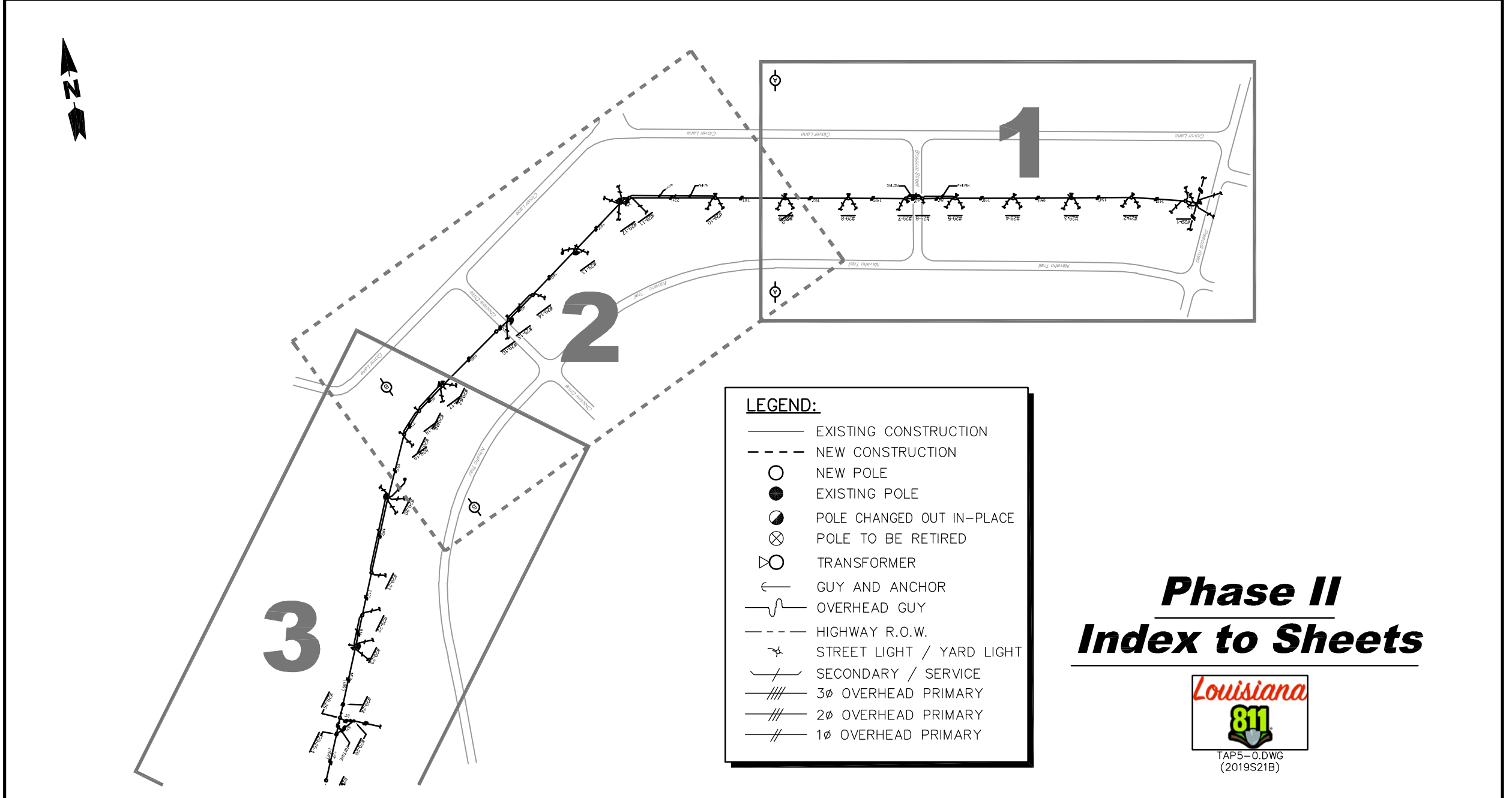


2019S21B-5.DWG
(2019S21B)



Louisiana
811
2019S21B-6.DWG
(2019S21B)

Phase I - Dwg 6



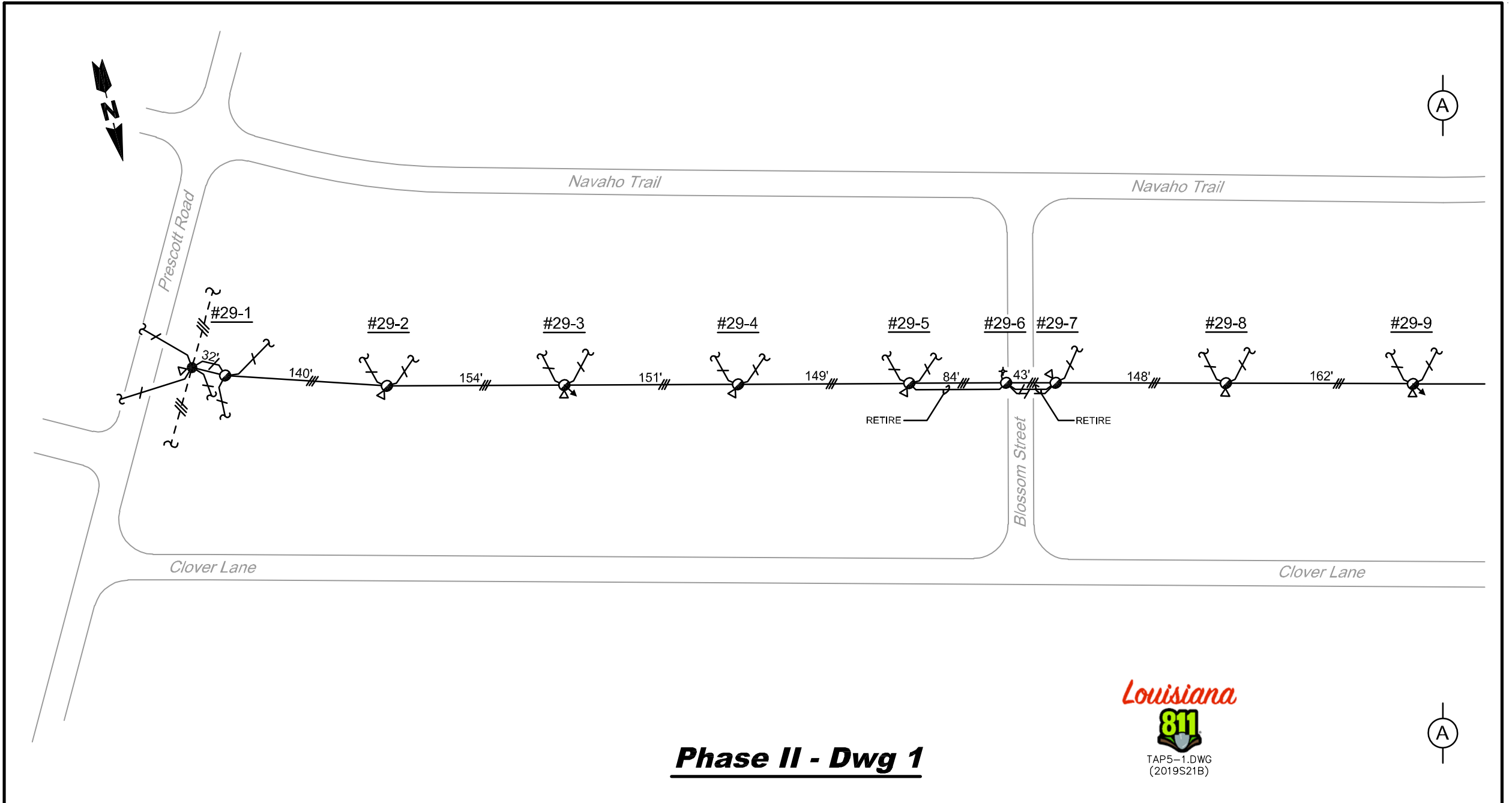
LEGEND:

- EXISTING CONSTRUCTION
- - - NEW CONSTRUCTION
- NEW POLE
- EXISTING POLE
- ◐ POLE CHANGED OUT IN-PLACE
- ⊗ POLE TO BE RETIRED
- ⊕ TRANSFORMER
- ↔ GUY AND ANCHOR
- ~ OVERHEAD GUY
- - - HIGHWAY R.O.W.
- ⚡ STREET LIGHT / YARD LIGHT
- SECONDARY / SERVICE
- /// 3Ø OVERHEAD PRIMARY
- 2Ø OVERHEAD PRIMARY
- 1Ø OVERHEAD PRIMARY

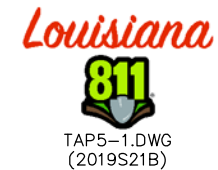
Phase II
Index to Sheets

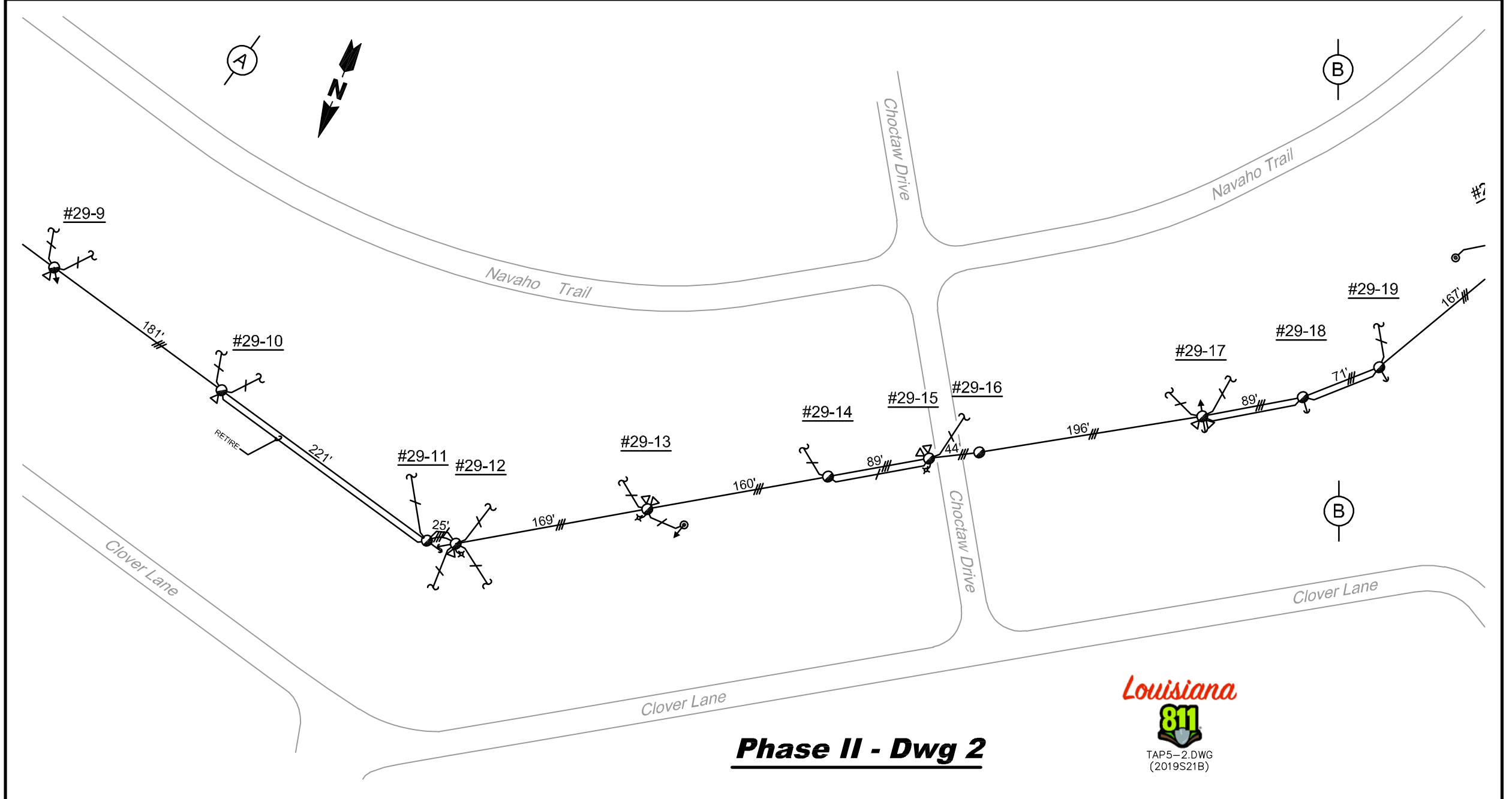


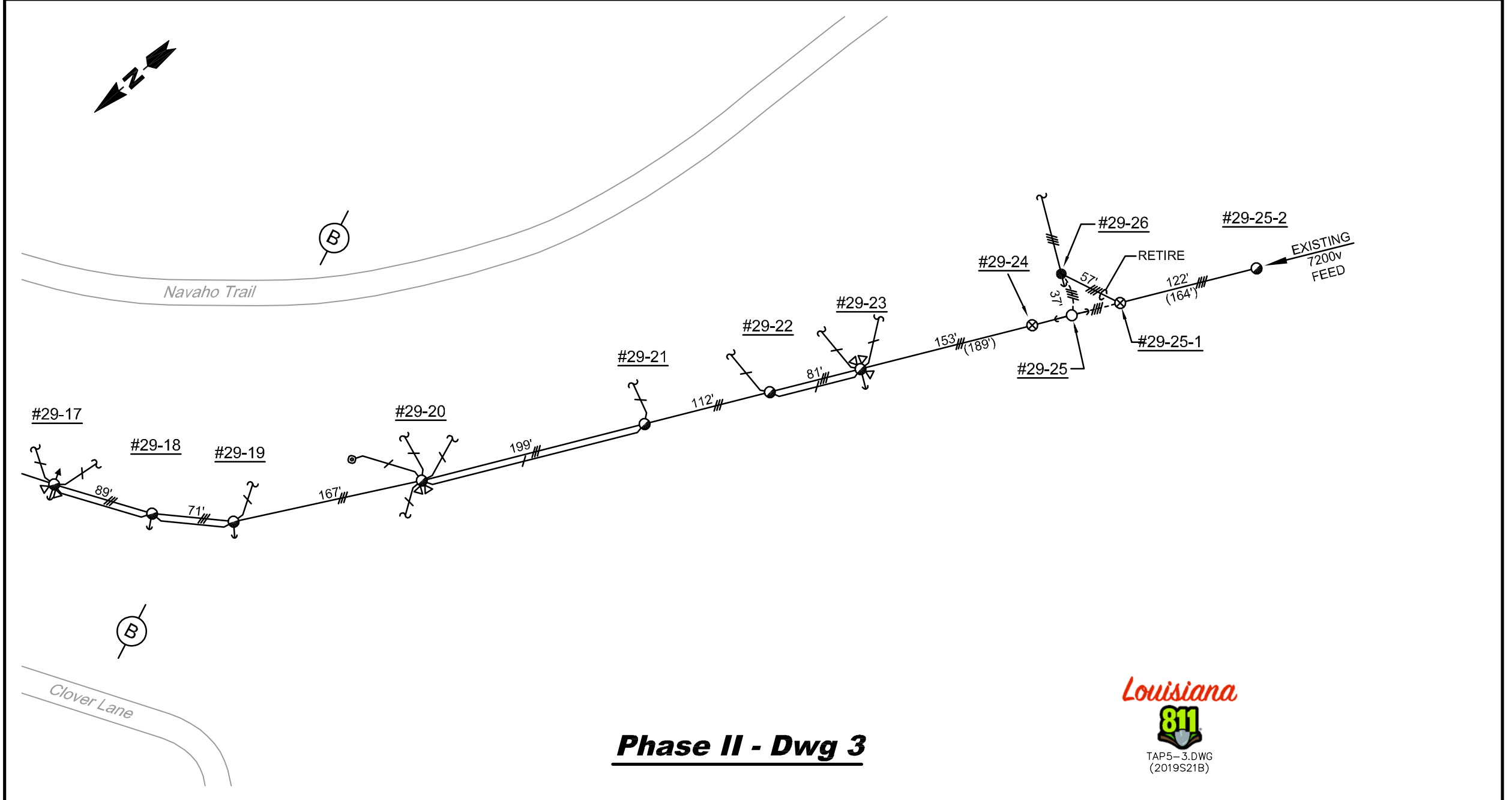
TAP5-0.DWG
(2019S21B)



Phase II - Dwg 1







Phase II - Dwg 3

