

ADDENDUM NO. 1

January 3, 2019

PROJECT: **Control Building for Twin Bridges 300 MVA Auto-Transformer**
 BHA #2019E16A
 Bid Opening Date: January 22, 2019 – 10:00 a.m.

OWNER: **City of Alexandria**
 Alexandria, Louisiana

ENGINEER: **BHA, Inc.**
 Post Office Box 4467 (70821)
 9342 Lindale Avenue
 Baton Rouge, Louisiana 70815
 Attn: Jay Cefalu

The Plans and Specifications contained in the above listed project documents are hereby revised as indicated below and prospective bidders are required to take into consideration all items presented hereby in the preparation of their bids, as though contained in the bidding documents as originally issued. In the event of any conflicts between the original documents and this Addendum, the provisions of this Addendum shall govern.

This Addendum and its cover e-mail shall be attached **INSIDE** the front cover of the bidding documents by the prospective bidders, thereby becoming a part of these documents.

1. Reference Section D – General Specifications

Replace Page D-3 with the attached **Revised Page D-3 Revision 1 01/03/2019**.
Added new paragraph – Minimum Insulation R-Values.

2. Reference Section D – General Specifications

Replace Page D-5 with the attached **Revised Page D-5 Revision 1 01/03/2019**.
Replaced D.C. Load Center paragraph.

3. Reference Section E – Drawings

Replace Drawing TBM-07 Rev A, with the attached **Revised TBM-07 Rev B**.
Relocated exterior light fixture.

Doors: The door shall be 18 gauge metal with weather stripping and plain bearing hinges. All doors are to be equipped with weather-tight thresholds. All doors are to be supplied with “panic device” accessories and insulated with an insulating value rating of R7 or greater. All doors shall be equipped with an automatic door closer. All doors shall open outwards and be equipped with exit signs. A rain hood shall be installed above the door with a minimum depth of 3'-0".

Trim: Flashing and/or trim shall be provided by building manufacturer at eaves, rakes, corners, bases, framed openings, and wherever necessary to seal against the weather, to seal against insects, and to provide a neat, finished appearance. The trim shall be the building manufacturer’s standard to coordinate with the wall panels. Trim to be a minimum of 24 gauge.

Paint: All miscellaneous painting to be done with two (2) coats of the best quality paint to resist chalking, fading, cracking, and peeling. Paint type and color should match metal building manufacturer’s specification. All materials to be painted will be cleaned and have the grease removed, then one coat of primer applied. For both of the side walls in the control room, black one inch squares shall be painted in the corners to indicate where the girths lie beneath the wall panels. If applicable, the floor of both rooms shall be first cleaned with muratic acid (4 parts water, 1 part acid) and allowed 24 hours to dry and then painted with two coats of a gray, 2-component epoxy. New concrete must be allowed 30 days curing time before painting.

Color Schedule

1. All Trim	White
2. Interior Wall Panels	White
3. Ceiling Panels	White
4. Eave Gutters	White
5. Down Spouts	White
6. Partition Door	White
7. Exit Doors	White
8. Interior Partition Wall	White

INSULATION AND INTERIOR FINISH

Fire hazard ratings of the insulation and the interior finish material shall carry an Underwriter’s Laboratories, Inc., (U.L.), classification indicating a flame spread of 25 or less, or a Factory Mutual system classification as a Class 1 material. These ratings shall apply to each individual component if field assembled, or to the composite unit if supplied factory assembled.

Flooring: Floor is to be painted gray with epoxy primer and epoxy paint.

Exterior Door: 36” wide x 84” high insulated 18 gauge steel exterior door, with insulation value rating of R-7, with stainless steel ball-bearing tamper-proof hinges, panic device exit hardware, passage style lever handle, deadbolt lockset, weather-tight threshold, and fiberglass weather hood.

Building Ground Pads: The building contractor shall provide ground pads on building (2 total) for connecting the building to station grid (3/8" x 3" x 6" Copper bus, NEMA 2-hole pattern).

Minimum Insulation R-Values: Wall – 7, Roof – 8, and Floor – 4.

A.C. Loadcenter: One (1), 120/240VAC, Single Phase, Three-Wire, 225 Amp main breaker, rated 30KAIC 30 circuit 1 pole breaker spaces, NEMA Type 1 Panelboard, surface mounted, Square D #NQ30L2C/Box Catalog #MH44/Hinged Front NC44-HR/ Ground Bar Kit Catalog #PK23GTAL All branch breakers shall be QO type rated 10 KAIC.

<u>CKT NO.</u>	<u>DESCRIPTION</u>
# 1	Interior/Exit Lights
# 3	Interior Receptacles
# 5	Smoke Detector
# 2	Exterior Lights
# 4-6	Air Conditioner/Heat Unit

D.C. Load Center: One (1) Square D I-Line, Single-Phase, Two Wire, 250Vdc with a two-pole 225 Amp LA main breaker, NEMA Type 1 (interior, trim and box), surface mounted, no neutral panelboard, Catalog No. HCM-18642MN with 4-piece trim including door, Catalog No. HCM-64TSD, and Box Catalog No. HC3264B. Equipped with the following two-pole 240V, FA branch circuit breaker.

<u>CKT NO.</u>	<u>DESCRIPTION</u>
#1	D.C. Lighting

- Heat Pump:**
- Wall Mount Type
 - 24,000 BTUH Cooling Capacity
 - 10K2 Electric Heat @ 230VAC
 - 840 CFM F.A. Blower, Dry Coil with 1" Filter
 - Filtered Fresh Air Intake with 0-25% Manually Adjustable Damper
 - Rated 230/208VAC, 60 Hz, Single Phase

 - Built-in Rainhood
 - 13.0 Seer
 - 1" Throw-away Filter
 - Built-in Circuit Breaker Disconnect
 - Separate Disconnect Not Required
 - Factory Installed Low Ambient Control

** 2-POLE BREAKER **

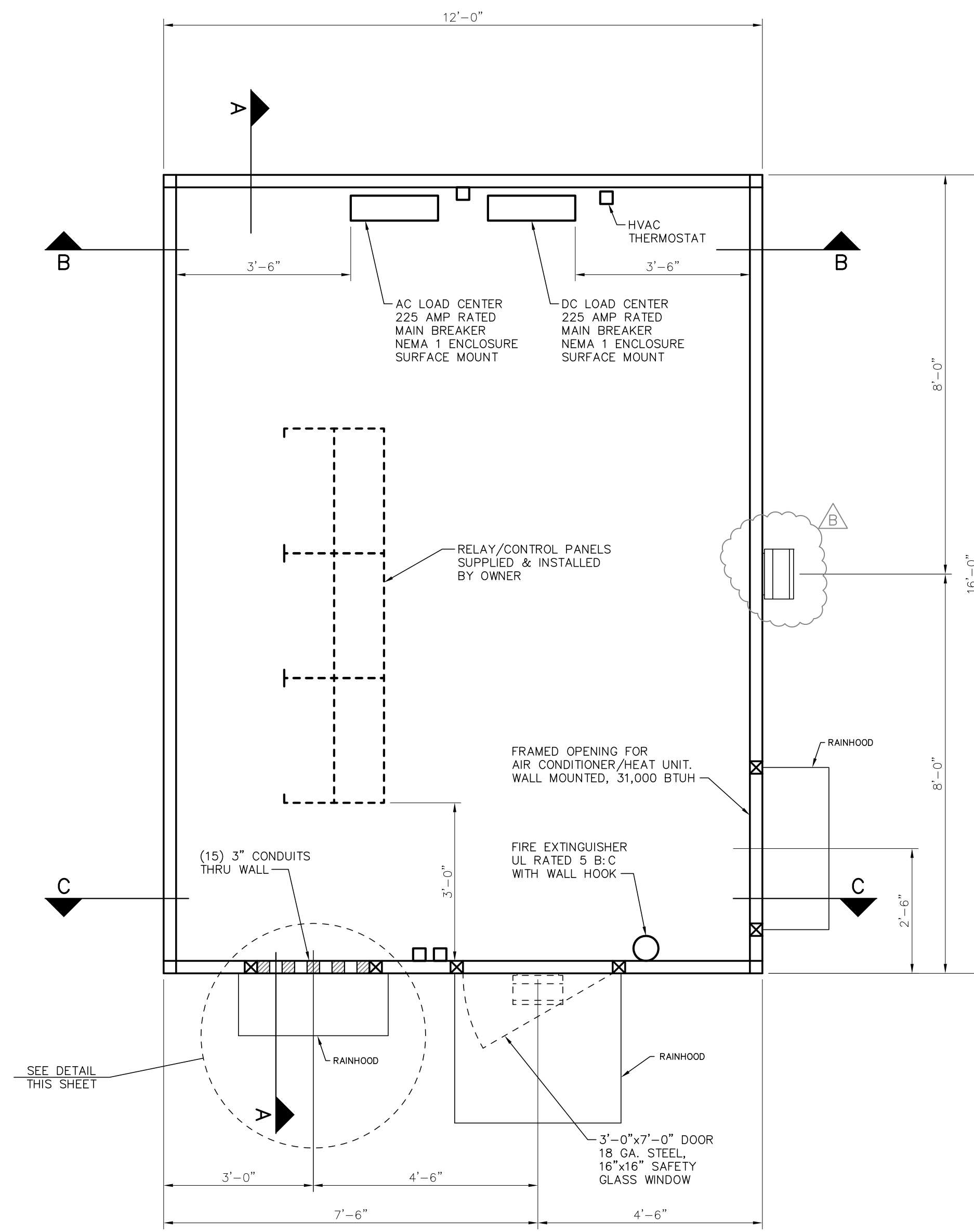
A/C Thermostat: One (1) wall mounted automatic changeover.

Fire Extinguisher: One (1) UL Rated 5 BIC with wall hook.

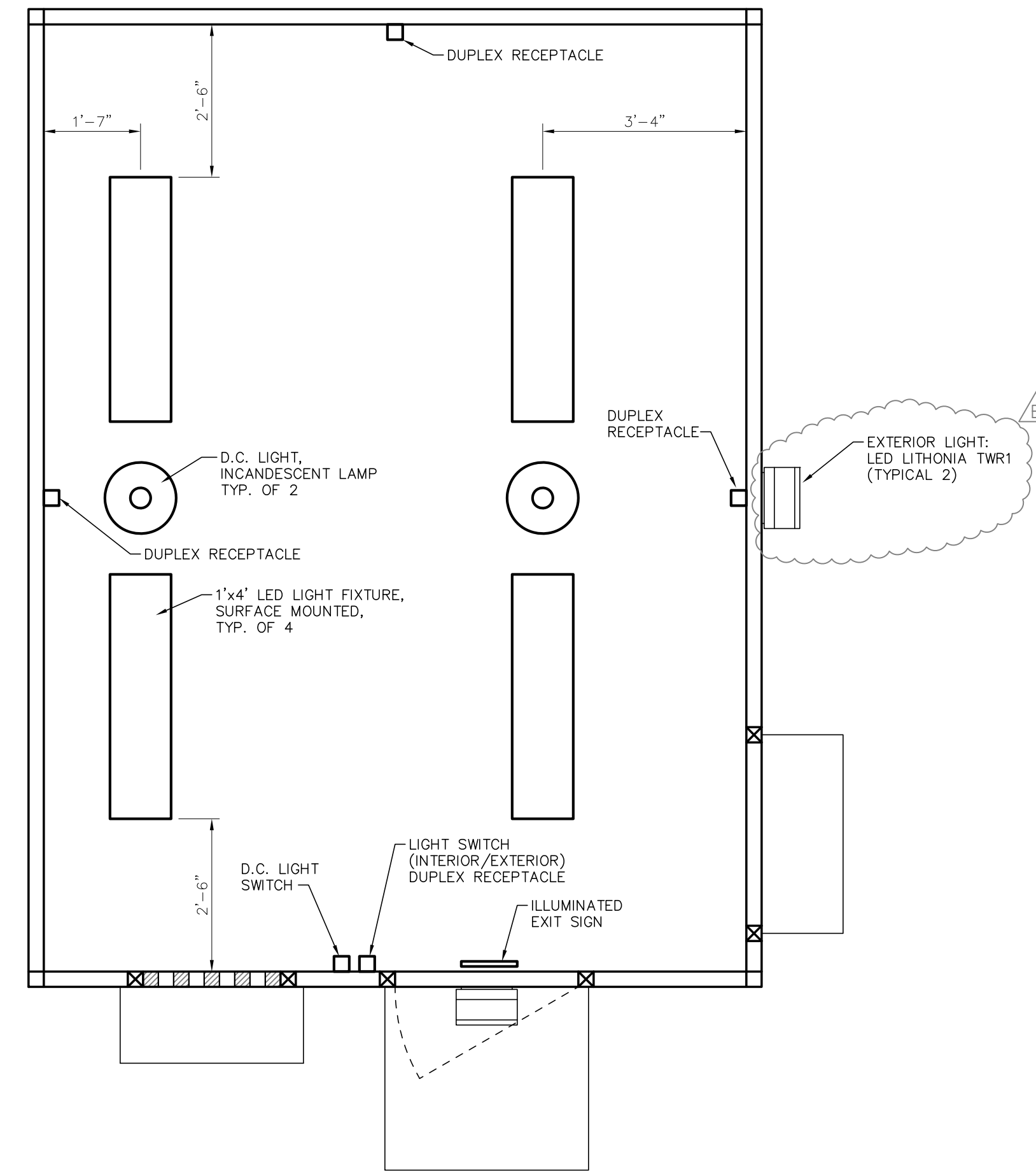
Smoke Detector: One (1) Ionization Type smoke detector, ceiling mounted, 120VAC operation, Form C contacts, Grainger #3T964.

Door Canopy/Rain Hood: Doorway.

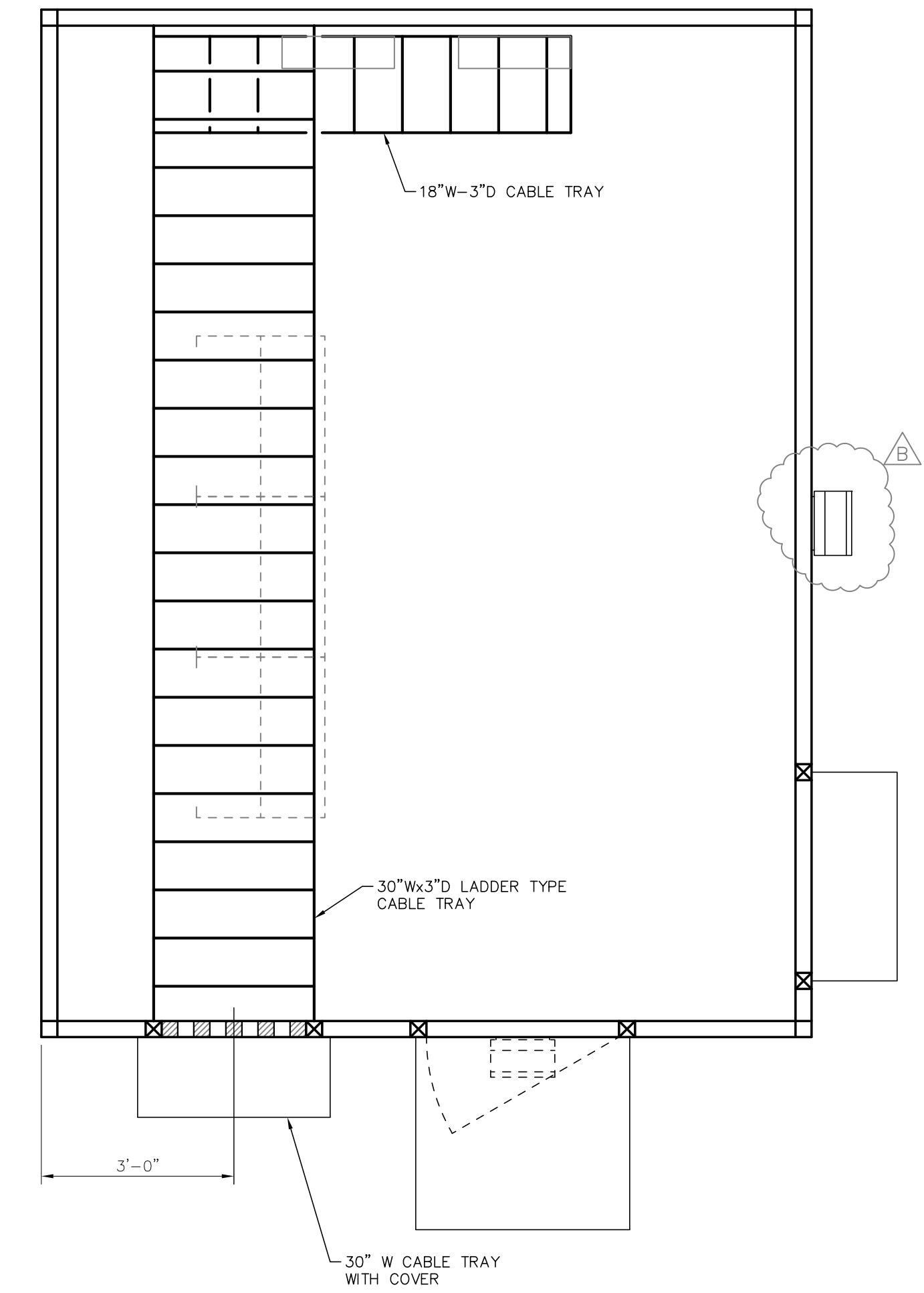
Cable Tray: 18' Wide Straight, 18" Wide Straight Section, 4" Deep, 3" Loading Depth, Aluminum Ladder Type Cable Tray, 6" Rung Spacing.



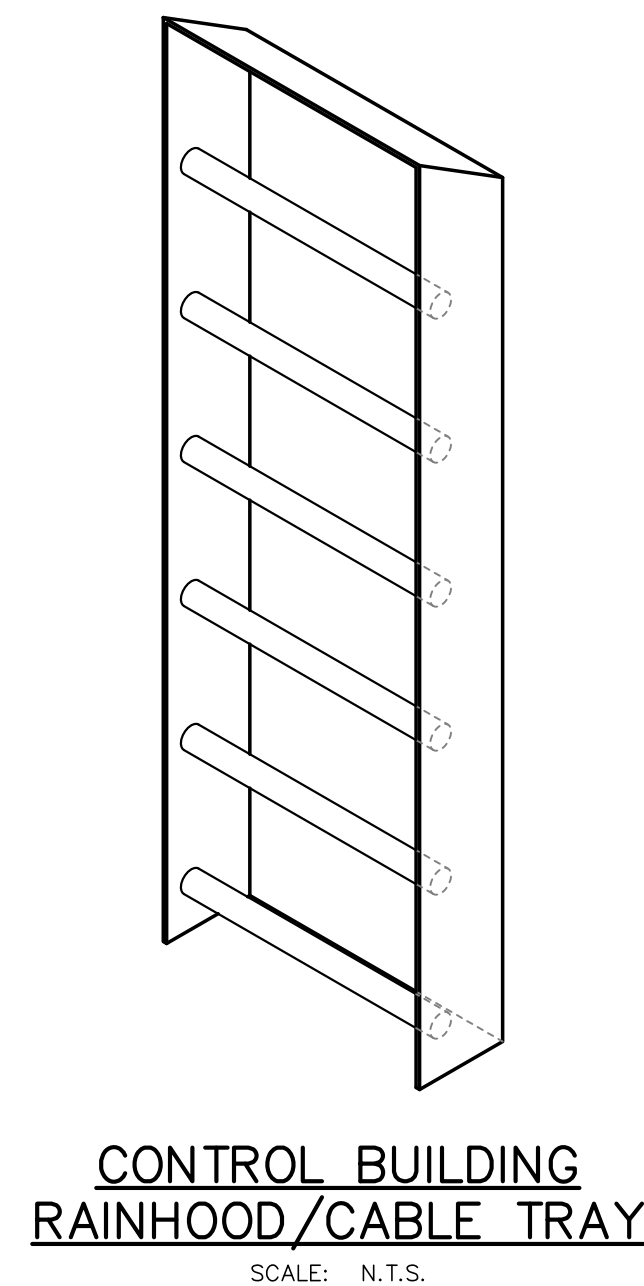
**CONTROL BUILDING
EQUIPMENT LAYOUT**
SCALE: 1/2"=1'-0"



**CONTROL BUILDING
LIGHTING & POWER LAYOUT**
SCALE: 1/2"=1'-0"



**CONTROL BUILDING
CABLE TRAY LAYOUT**
SCALE: 1/2"=1'-0"



**CONTROL BUILDING
RAINHOOD/CABLE TRAY**
SCALE: N.T.S.

**FOR BIDDING
PURPOSES ONLY**

				TWIN BRIDGES TRANSFORMER REPLACEMENT CONTROL BUILDING LAYOUT			
				CITY OF ALEXANDRIA ALEXANDRIA, LOUISIANA			
NO.		DATE		BY		REVISIONS	
B	12/31/18	BHA	FOR BIDDING PURPOSES ONLY				
A	10/17/18	BHA	FOR BIDDING PURPOSES ONLY				
				PROJECT NO. : 2019-E-16A		REV. : B	
				BHA, INC. BATON ROUGE, LOUISIANA			