



# Alexandria Recreation & Education Program

(AREP)

April 2014



# PROPOSITION (AREP RECREATION MILLAGE)



**VOTE: May 3, 2014**

## **L14-095 - Rapides Parish, City of Alexandria -**

6 mills tax, 20 years, 2014-2033, acquiring, constructing, improving, maintaining or operating parks, playgrounds, recreation centers and other recreational facilities and programs, including cultural, educational and leisure activities, together with necessary furnishings and equipment, provided that the first 3 mills levied shall be applied as follows:

**(1) 35% for capital purposes and;**

**(2) 65% for operations, maintenance and staffing, with revenues in excess of 3 mills be used solely for operations, maintenance, staffing, facilities and programs at the Alexandria Zoological Park.**

# Existing Recreation Assets



## CoA Recreation Assets:

## PARKS AND RECREATION



CITY PARK



REC CENTER

Parks are closed at sundown except for the tennis courts which close at 10 PM. **Parks and tennis courts are closed during bad weather. All facilities are subject to closure during maintenance.**

20

PARKS

17

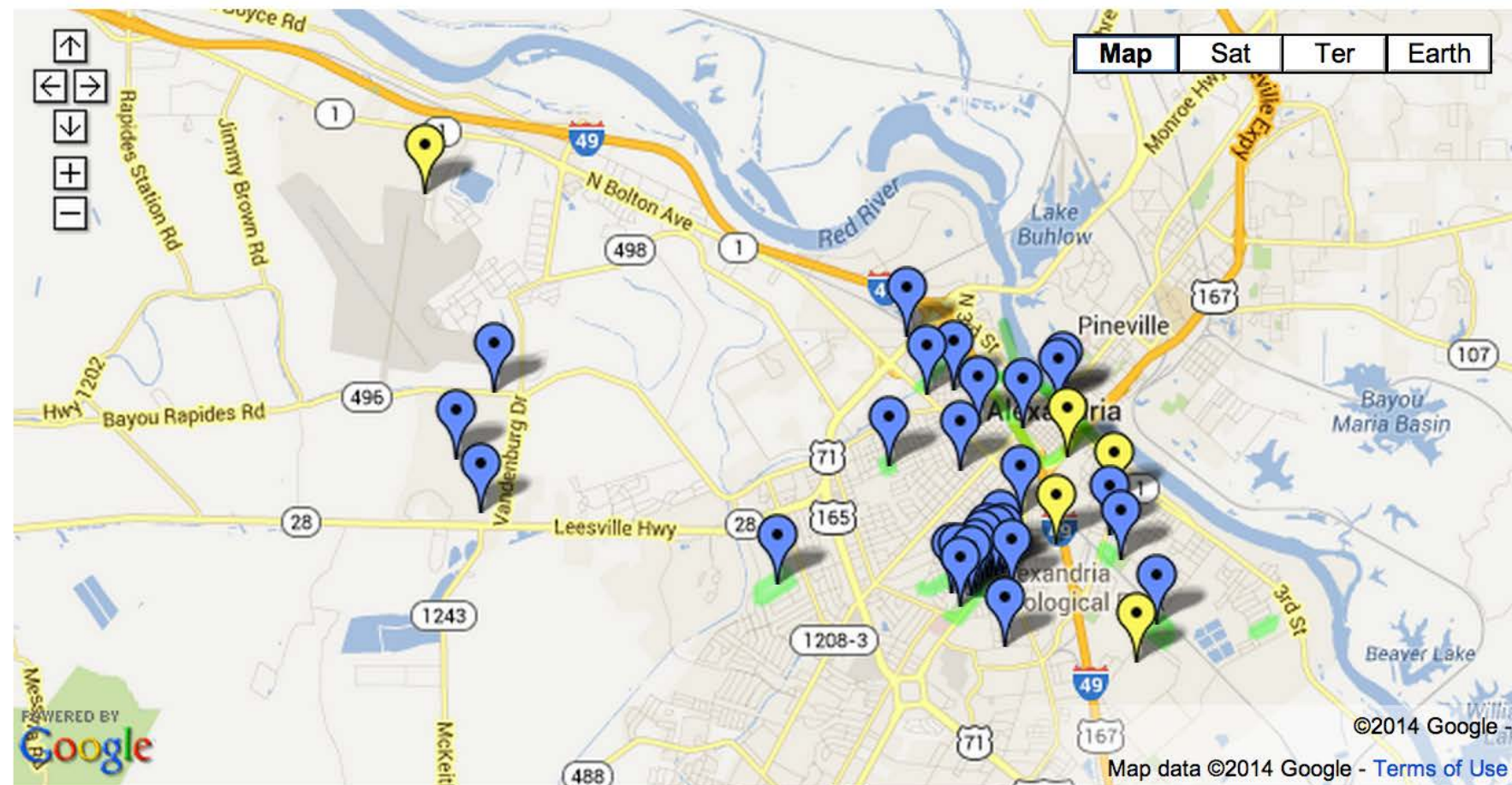
FACILITIES

3

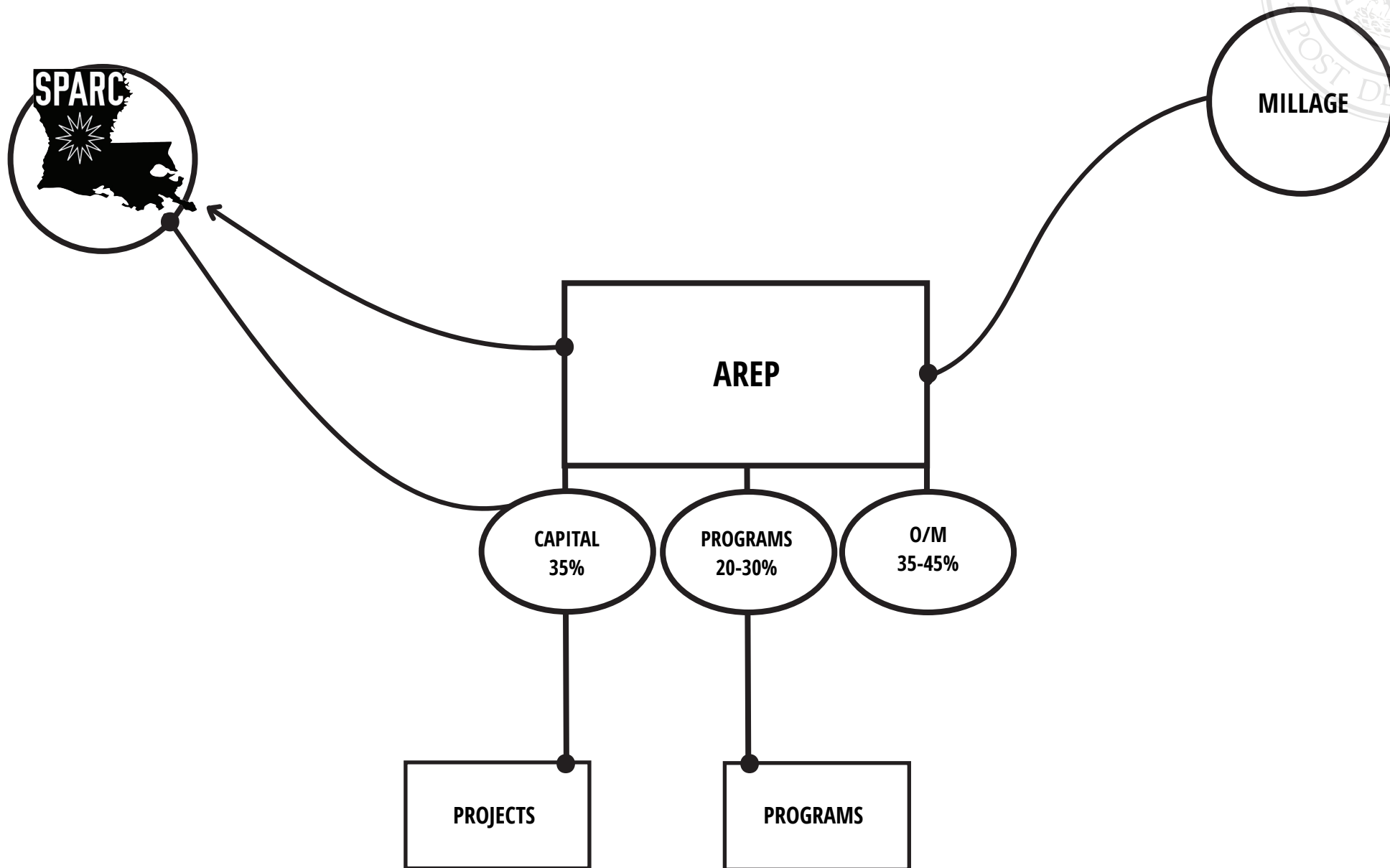
GREENWAYS

5

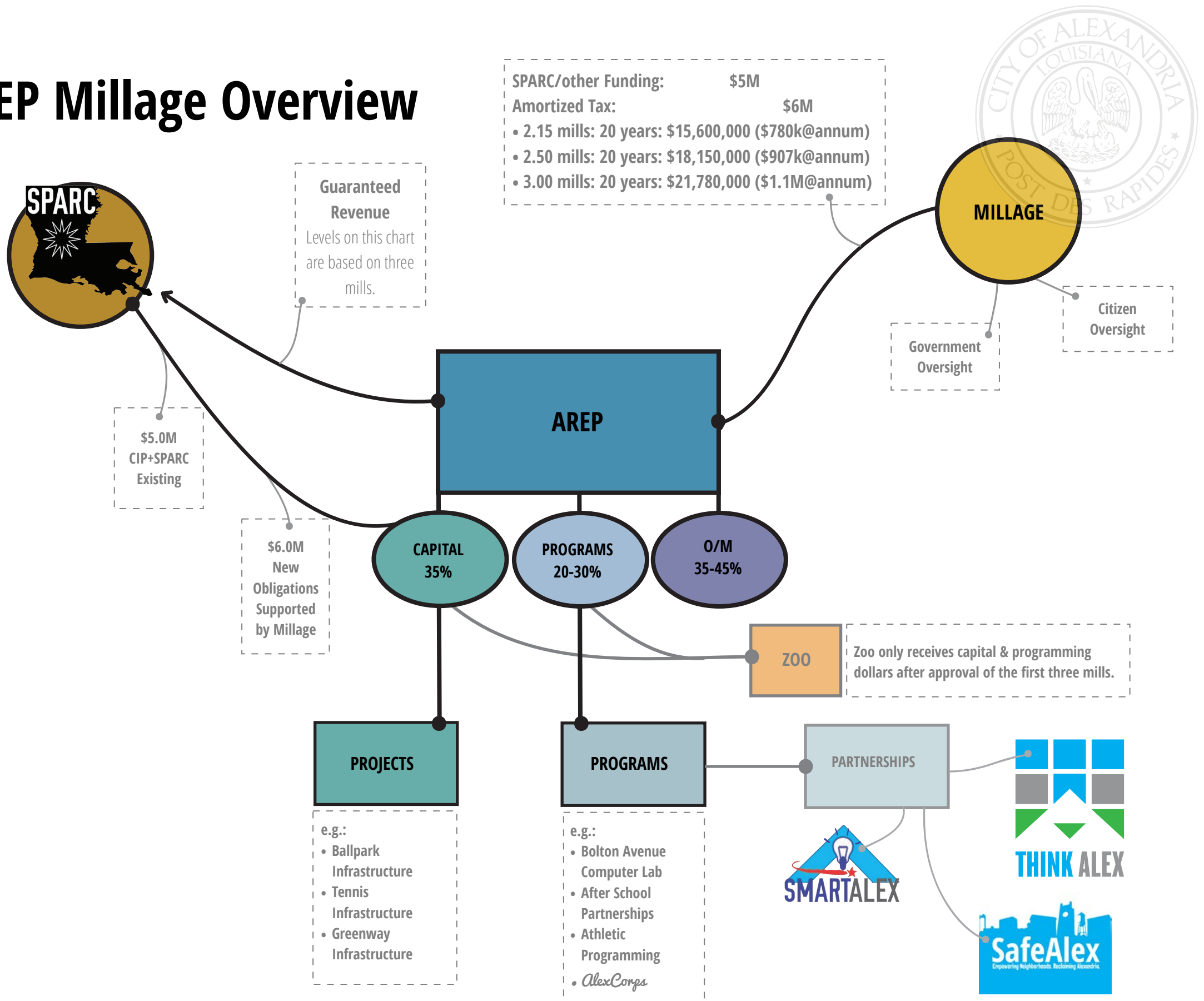
COMMUNITY CENTERS



# AREP Millage Overview



# AREP Millage Overview



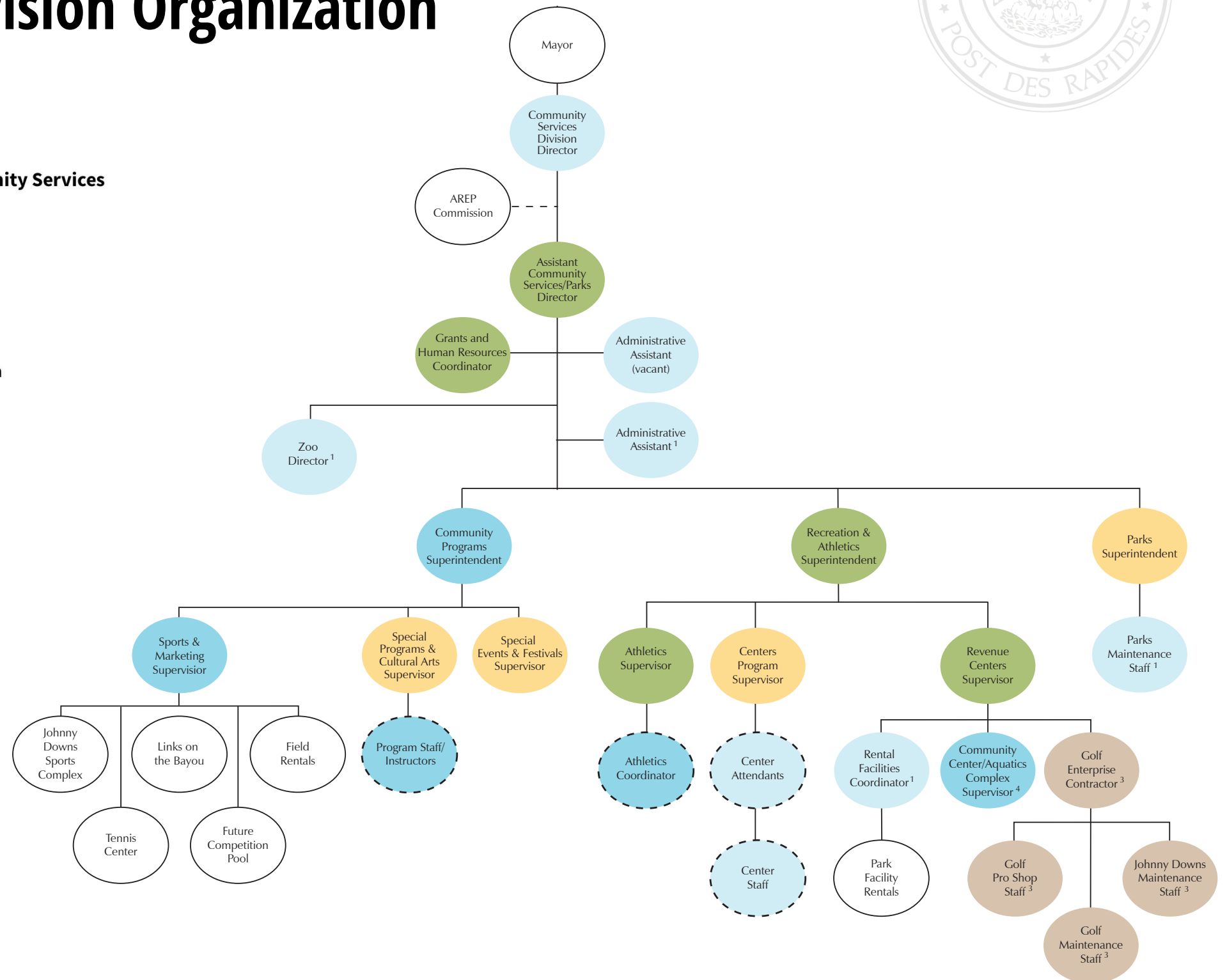


# Lose & Associates Proposed Community Services Division Organization

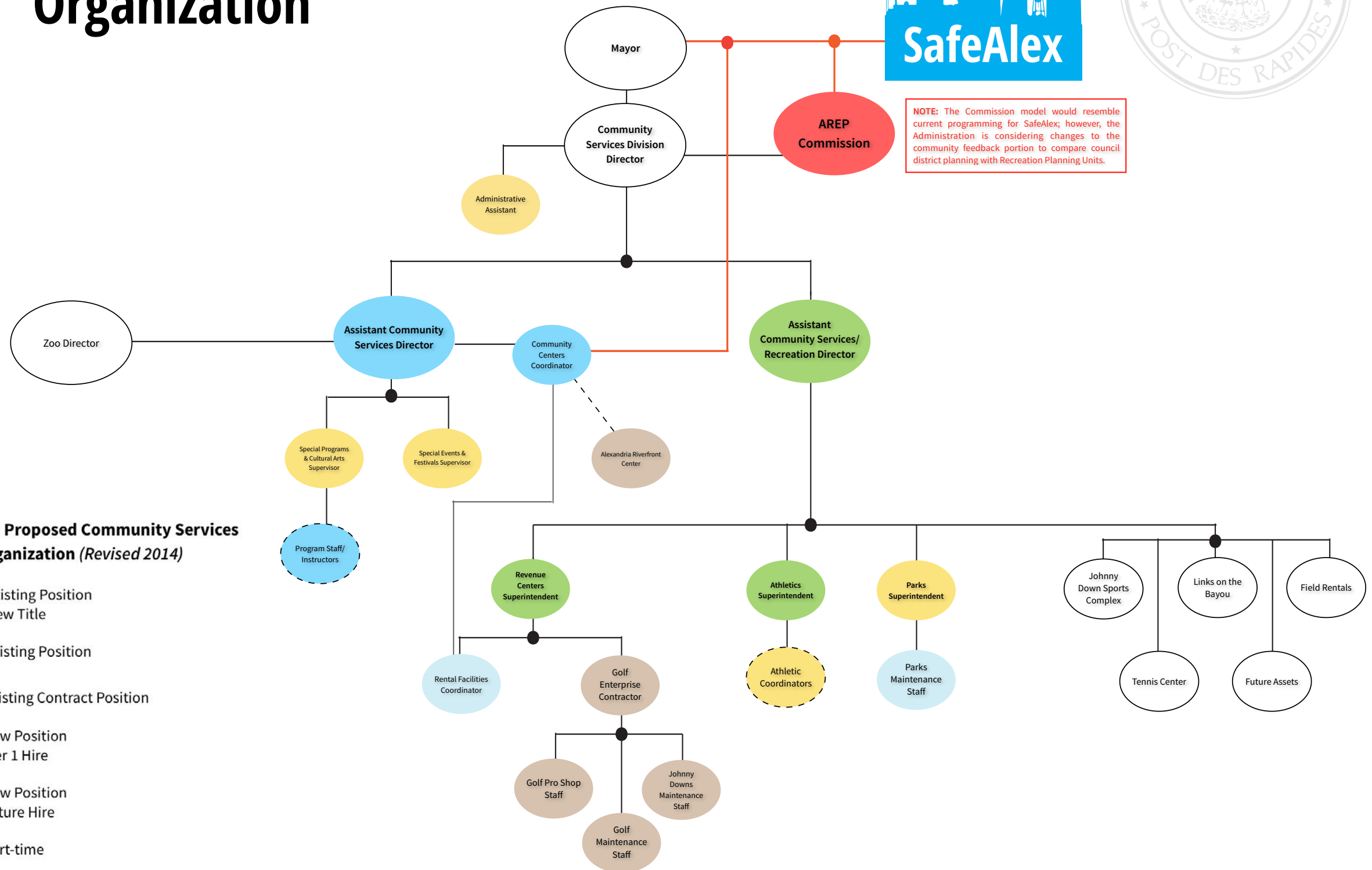


**Figure 4.11: Proposed Community Services Division Organization (2009)**

- Existing Position  
New Title
- Existing Position
- Existing Contract Position
- New Position  
Tier 1 Hire
- New Position  
Future Hire
- Part-time



# Proposed Community Services Division Organization



**NOTE:** The Commission model would resemble current programming for SafeAlex; however, the Administration is considering changes to the community feedback portion to compare council district planning with Recreation Planning Units.



# How much does this cost?

A property worth \$100,000 has an assessed value of \$10,000 (10 %). Find out the annual cost per homeowner by multiplying the assessed value times six (6).

**Example:** 6 mills for a home valued at \$100,000 and assessed at \$10,000 would see a single increase of \$60 in property taxes per year. That equates to about \$5 a month.

Home Value	Assessed Value	Annual Cost
\$50,000	\$5,000	\$30
\$150,000	\$15,000	\$90
\$200,000	\$20,000	\$120
\$250,000	\$25,000	\$150
\$300,000	\$30,000	\$180
\$400,000	\$40,000	\$240
\$500,000	\$50,000	\$300





# **Recreation Investment**

2006-2014



# Frank O. Hunter Park



Now



After

**Phase I: \$1,600,000**  
**Phase 2: \$1,051,000**

## NEW:

New lighting, play area, football complex, expanded recreation center, sports courts, new walking trail, picnic tables, benches, and waste receptacles, new tree plantings, additional parking, practice area.





DISTRICT  
4

\$2,700,000

# Land of the Jaguar



Before



After



Before



After

Jaguar exhibit, the spectacled bear, ocelot and primate enclosures were enlarged to accommodate larger crowds and create a better quality of life for the animals.





DISTRICT  
4

\$395,000

# Zoo Festival Plaza



**Before**



**After**



**Before**



**After**

Bronze animal sculptures, a water area containing a large granite globe suspended in water; shooting water fountain features; benches.





# Harmon Park



**Before**



**After**

**\$420,746**

(NOTE: Amount also associated with Cheatham Park project.)

## **NEW:**

New lighting, replace fencing, replace play equipment, new walking trail, rehabilitate pavilion, new picnic tables, benches, and waste receptacles, new tree plantings.





# Cheatham Park



**Before**



**After**

**\$420,746**

(NOTE: Amount also associated with Harmon Park project.)

## **NEW:**

Additional parking, new lighting, replace play equipment, new walking trail, new picnic tables, benches, and waste receptacles, new tree plantings.





# MPAT



**Before**



**After**

**\$1,755,000**

(NOTE: Amount also associated with Acadian and City Park projects.)

## **NEW:**

Parking, lighting, play equipment, walking trail, pavilion, picnic tables, benches, and waste receptacles, tree plantings and landscaping, fencing, disc golf course, restroom, festival lawn.





# City Park



**Before**



**After**

**\$1,755,000**

(NOTE: Amount also associated with Acadian and MPAT Park projects.)

## **NEW:**

New lighting, replace play equipment, new walking trail, replace fencing, rehabilitate pavilion, new sand volleyball court, new picnic tables, benches, and waste receptacles, new tree plantings.





# Acadian



**Before**



**After**

**\$1,755,000**

(NOTE: Amount also associated with MPAT and City Park projects.)

## **NEW:**

Parking, lighting, play equipment, walking trail, pavilion, picnic tables, benches, and waste receptacles, tree plantings and landscaping.





DISTRICT  
2

# HDQ



**Before**



**After**

**\$420,746**

**NEW:** Walking trail and a playground.

Improvements and expansion to provide quality of life areas of play for children and adults.





DISTRICT  
3

# Lincoln



**\$36,665**

**NEW:** Walking track



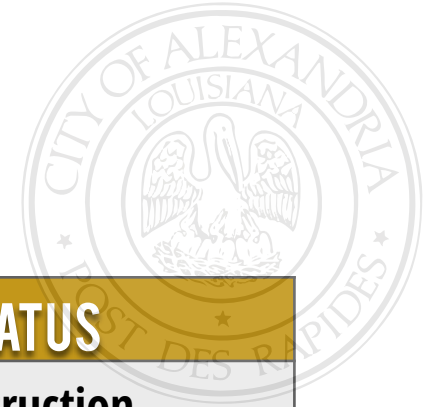
# Other Projects



- **WTO-3B Citywide Park Signage:** COMPLETED 2013
- **Restoration of Bringhurst Golf Course:** COMPLETED 2009
- **Recreational Park Improvements (Spray Pads):** COMPLETED 2009
- **Acadian Park Drainage:** COMPLETED 2007



# Total



DISTRICT	PROJECT	AMOUNT	STATUS
3	Frank O. Hunter	\$2,651,000	Construction
4	Land of the Jaguar	\$2,700,000	Complete
4	Zoo Festival Plaza	\$395,000	Complete
1	Harmon Park	\$213,000	Complete
3	Cheatham Park	\$213,000	Complete
2	MPAT	\$585,000	Complete
4	City Park	\$585,000	Complete
3	Acadian Park	\$585,000	Complete
2	HDQ	\$420,746	Complete
3	Lincoln	\$36,665	Complete
4	Park Signage Masonic Drive	\$137,400	Complete
Citywide	Park Signage (WTO-3B)	\$270,000	Complete
Citywide	Spray Pads	\$1,273,638	Complete
3	Acadian Park Drainage	\$408,910	Complete



# Total



## 14

Major Recreation Asset Projects

## \$10,474,359

Recreation Investments \*Since 2006





# **Infrastructure Investment**

2006-2014



# Bolton Avenue



**Before**



**After**



# Bolton Avenue



**Before**



**After**

*Extends from Elliott to Monroe Streets. Streetscape enhancements includes sub-surface utilities, drainage improvements, lighting, covered bus stops, signage and landscaping. These improvements will attract and encourage businesses to redevelop the area and begin establishing an identity for the corridor.*





# Fire Station No. 4



**Before**



**After**

Very little attention has been given to locations of fire stations since 1950. A study of fire station locations and population shifts need to be determined to improve fire safety response time.



# Fire Station No. 5



**Before**



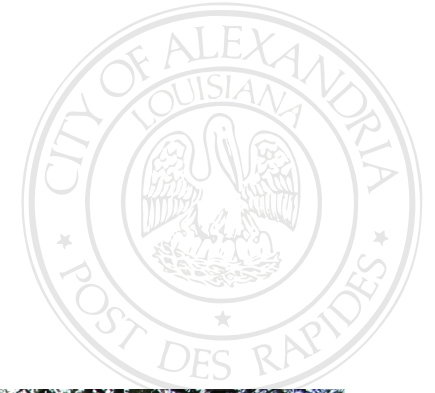
**After**

Very little attention has been given to locations of fire stations since 1950. A study of fire station locations and population shifts need to be determined to improve fire safety response time.





# Masonic Drive



## Improvements Include:

- Streetscape enhancement, introducing plantings and street trees with seasonal accent to both sides of Masonic.
- Pedestrian and vehicular gateways at Texas Avenue and Lee Street intersections that identifies Masonic Drive as a destination.
- Pedestrian walkway and expanded sidewalks.
- New bus slips and shelters.
- A series of new pedestrian crosswalks.
- Street furniture such as benches, bicycle racks, and litter receptacles.







## City of Alexandria Regional Gateways WTO-3D **Horseshoe @ Masonic**

**Description:** The Masonic @ Horseshoe Drive Gateway will be constructed of brick and cast stone that will match the obelisk on Masonic @ Lee and will be slightly larger. There will be a raised planter with landscape as well as some additional landscaping around the perimeter of the planter at ground level.





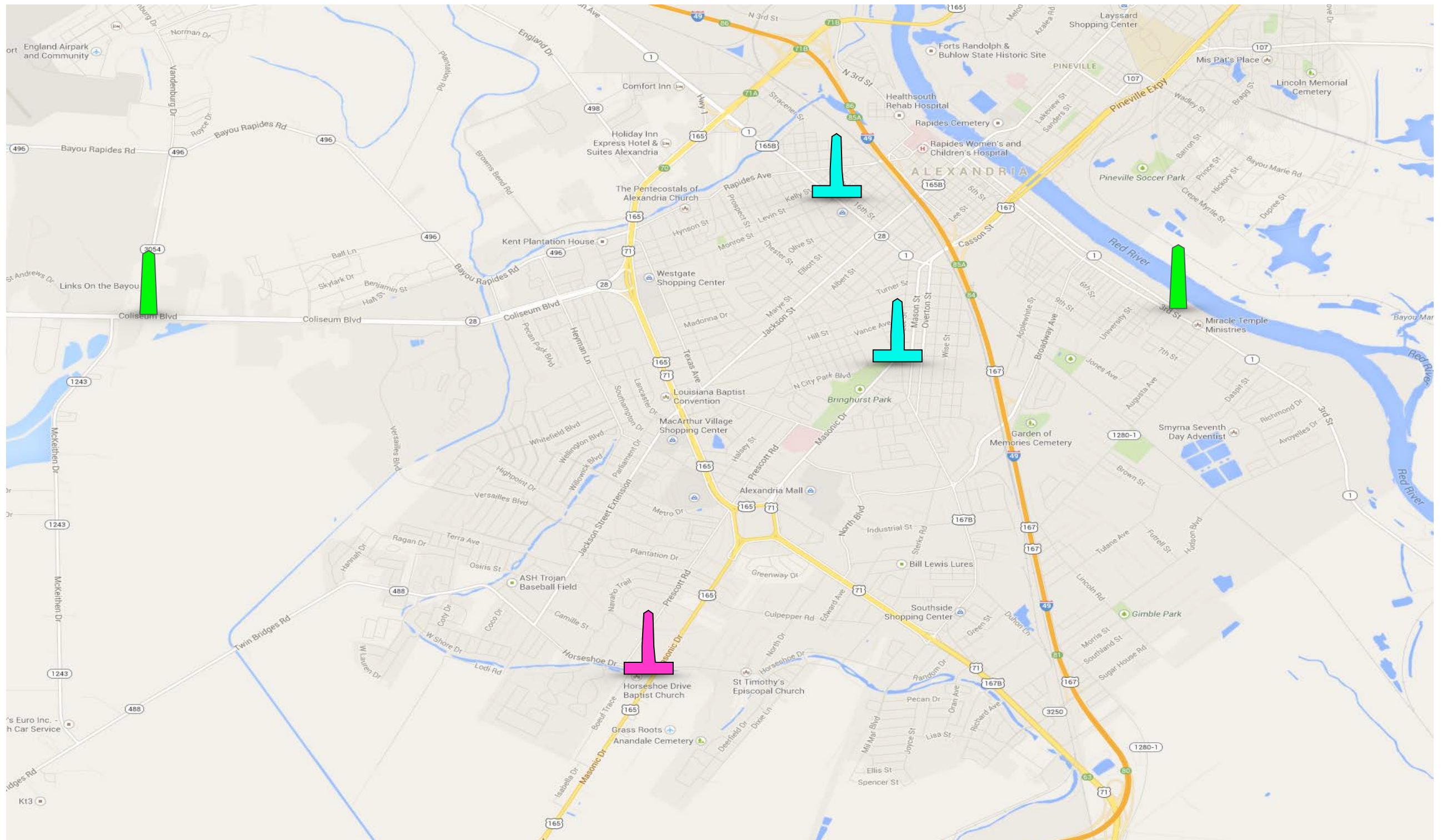


City of Alexandria Regional Gateways WTO-3D  
**28 West @ Vandenburg**  
**Third @ Main**

**Description:** Metal frames with a perforated metal exterior skin. The letters that spell out ALEXANDRIA will be made of aluminum. These structures will have internal lighting that will shine through the holes in the metal skin giving them a glow effect. The letters will also have lights on them. Both will also have a backdrop of Magnolias with other assorted plantings around the perimeter.



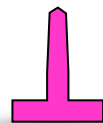




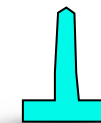
## City of Alexandria Regional Gateways WTO-3D



**28 West @ Vandenberg  
Third @ Main**



**Horseshoe @ Masonic**



**District Markers**



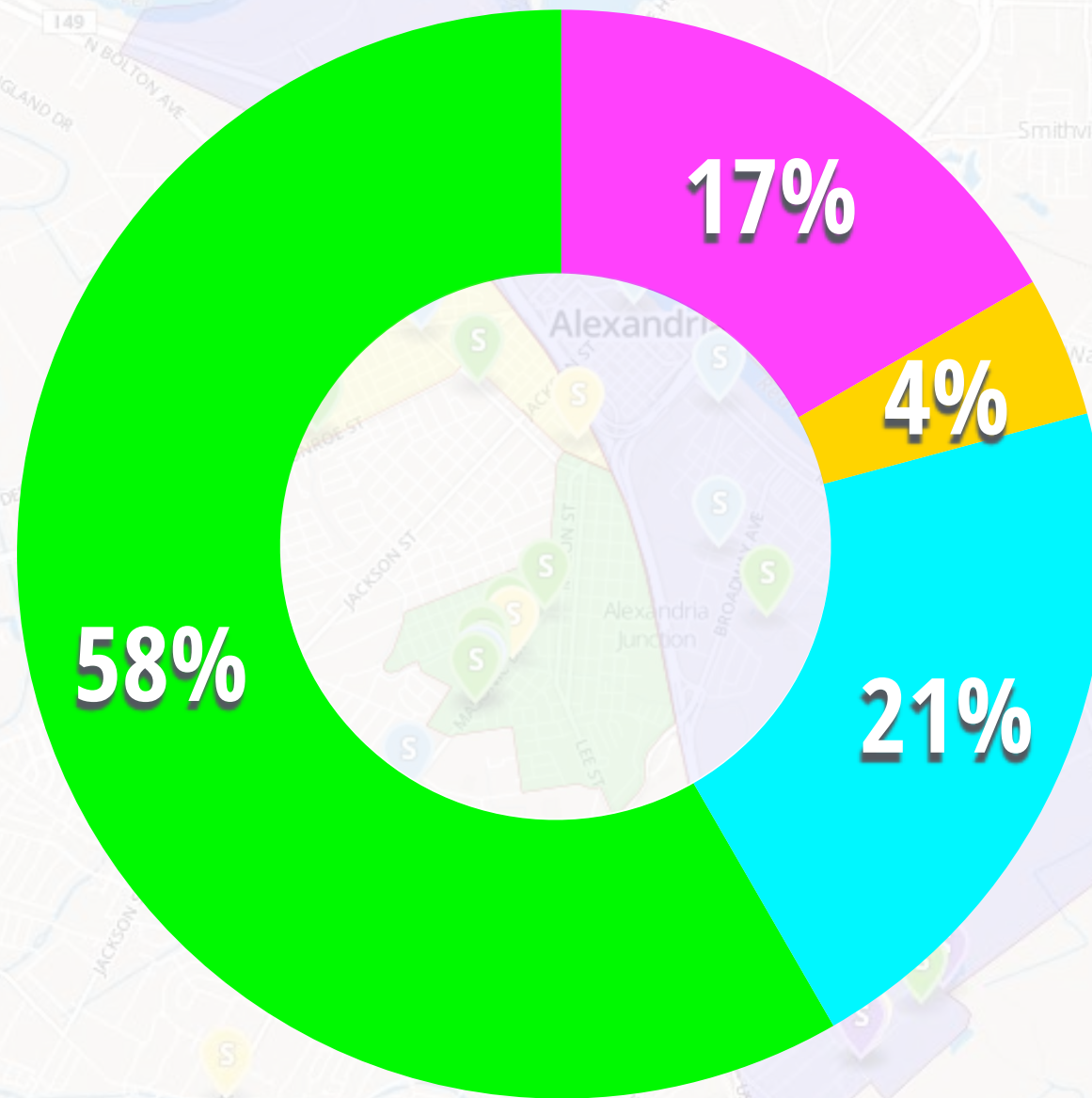


# SPARC Update

[Special Planned Activity Redevelopment Corridors]



March  
2014



24 Projects  
\$32,702,839

CONCEPT A & E DESIGN BID CONTRACT CONSTRUCTION COMPLETE



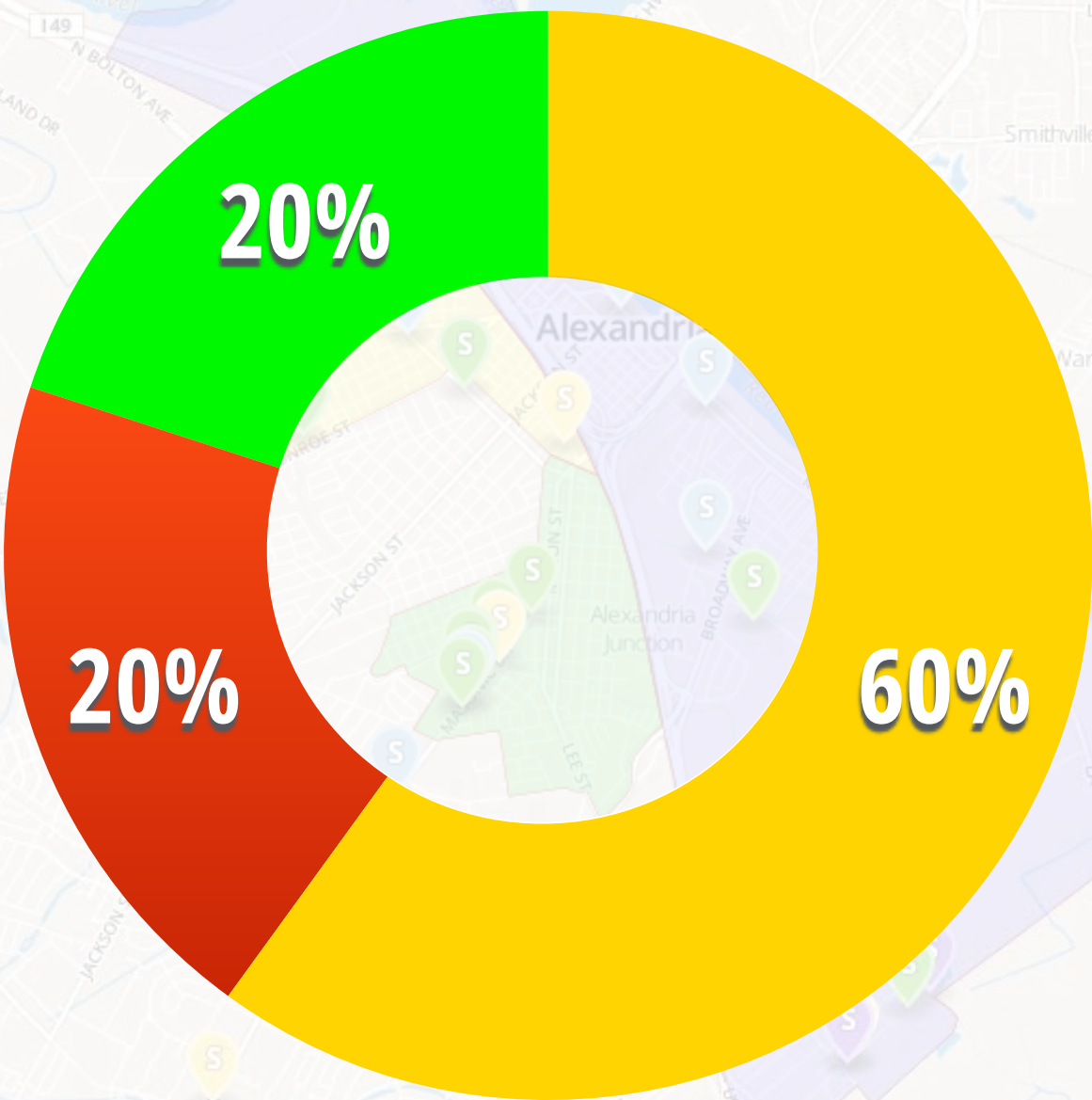


# MPO & SPARC Update

[Metropolitan Planning Organization]



March  
2014



5 Projects  
\$25,671,291

- CONCEPT
- A & E
- DESIGN
- BID
- CONTRACT
- CONSTRUCTION
- COMPLETE





# TEP & SPARC Update

[Transportation Enhancement Projects]



March  
2014

3 Projects  
\$4,950,000

CONCEPT A & E DESIGN BID CONTRACT CONSTRUCTION COMPLETE



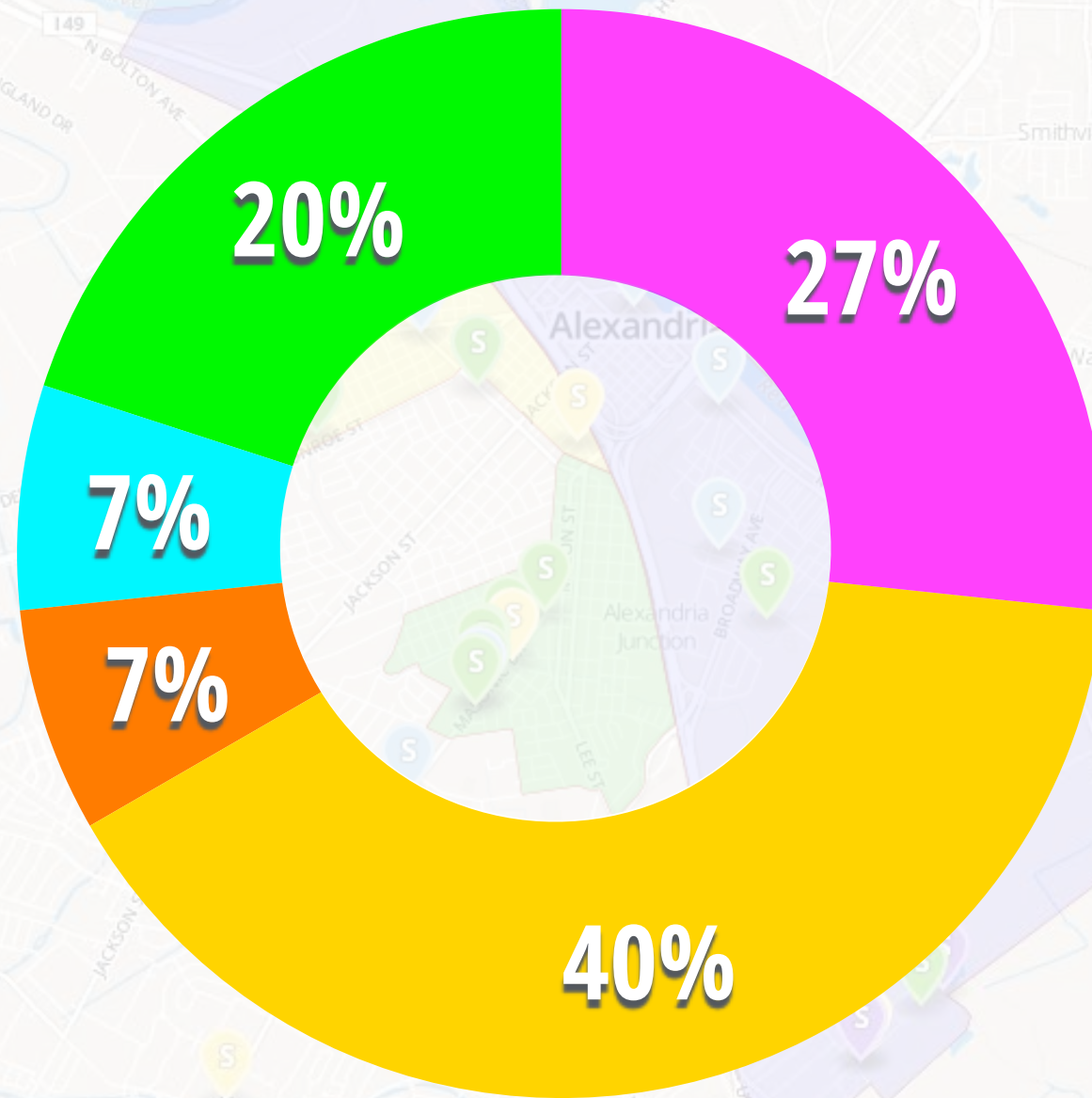


# CIP Update

[Capital Improvement Projects]



March  
2014



15 Projects  
\$25,426,490

CONCEPT A & E DESIGN BID CONTRACT CONSTRUCTION COMPLETE





# OFT Update

[Operation Fast Track]



March  
2014

**33 Projects**  
**\$38,500,775**

● CONCEPT ● A & E ● DESIGN ● BID ● CONTRACT ● CONSTRUCTION ● COMPLETE





# Other Projects Update



March  
2014

**3 Projects**  
**\$5,197,000**

CONCEPT A & E DESIGN BID CONTRACT CONSTRUCTION COMPLETE

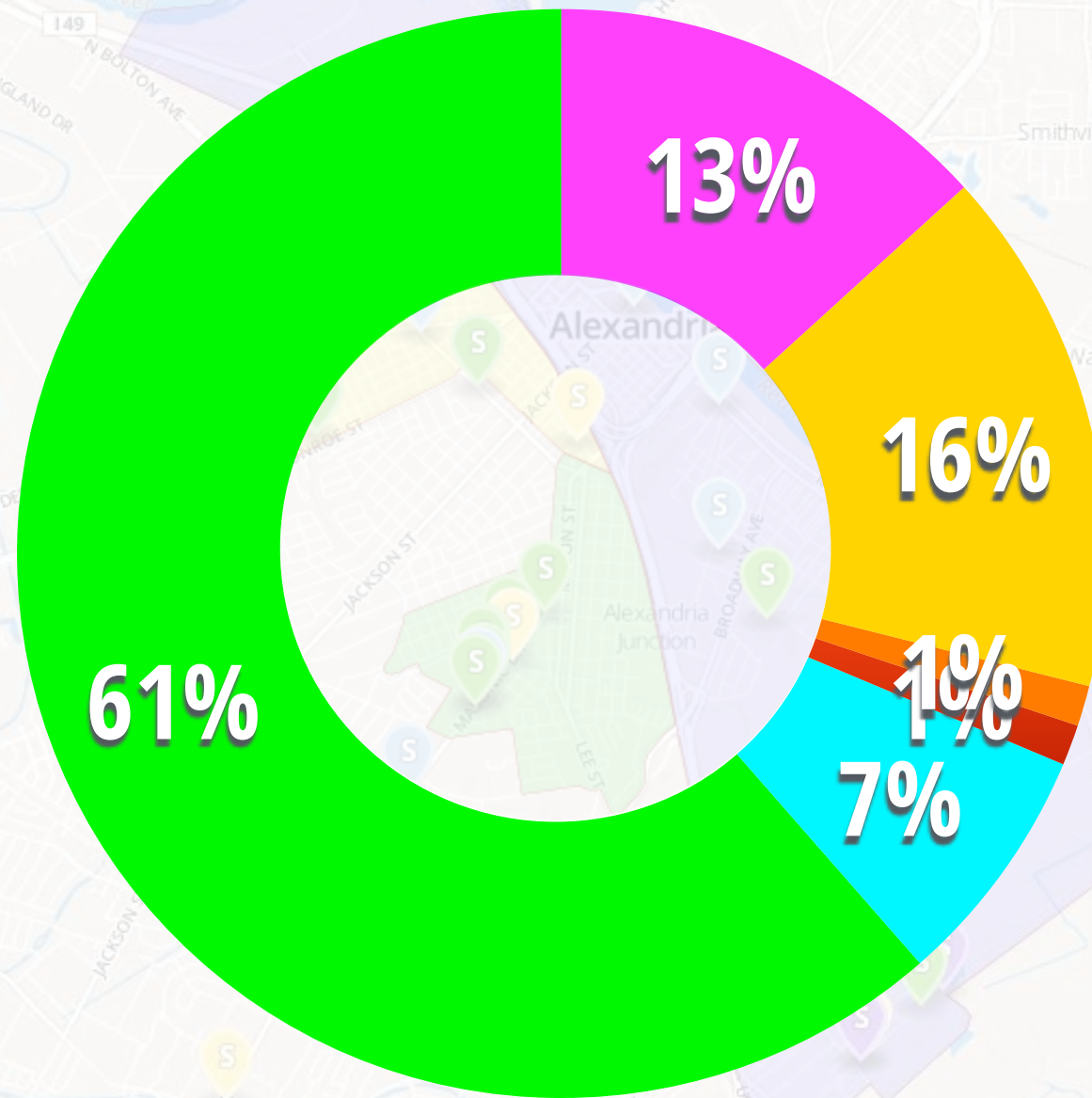






# Total Infrastructure Improvements

March  
2014



**83 Projects**  
**\$132,488,396**

CONCEPT A & E DESIGN BID CONTRACT CONSTRUCTION COMPLETE





**For additional **SPARC** information visit:**

<http://www.sparccommission.com/>

**For additional **AREP** information visit:**

<http://www.cityofalexandrialala.com/policy-news-0>

