



Sugarhouse Road Extension Rapides Parish



Open House Public Meeting
Thursday, February 18, 2010
4:00 pm to 7:00 pm

Phoenix Magnet Elementary Cafeteria
4500 Lincoln Road
Alexandria, Louisiana

MEETING FORMAT

This Public Meeting is being conducted as an Open House. Everyone is welcomed to attend any time during the hours of 4:00pm and 7:00pm. As you entered the building you should have been asked to sign in, so a record of your participation can be maintained. A short slide presentation on the project will be at intervals in the Phoenix Magnet Administrative Building. There will be members of the project team available to answer questions in the cafeteria at each station.

Throughout the Open House, the following informational stations will be available:

1. Sign-in and handout table
2. Slide Presentation
3. Exhibit and map display area where you may review the alternative routes and ask questions of project staff
4. Comment area for providing written and verbal comments and reviewing project documents

Project staff is available to assist you and to receive your comments. To get the most from your visit to the meeting, it is recommended that you visit all the areas.

PUBLIC COMMENTS/PARTICIPATION

Your participation is vital in ensuring that decisions on the proposed project reflect the needs of the people affected by the project. You may present your views on the project verbally or in writing. The insert of this handout is a written statement form, which we suggest you use for this purpose. Comments may be submitted as follows:

1. Written comments by hand tonight at the comment table
2. Verbal comments tonight at the comment table
3. Comments mailed to the address given on the form
4. Comments emailed to the address given on the form

Please include your name include your name, address, and the date on the comment form so we may contact you if needed. Comments mailed in must be postmarked within 10 days of this meeting.

Sugarhouse Road Extension Rapides Parish

INTRODUCTION

This meeting and handout provides information on the engineering and environmental studies that have been performed for the Sugarhouse Road Extension Project.

The proposed project was adopted by the local Metropolitan Planning Organization (MPO) as a part of its regional master transportation plan. This plan was funded by and vetted by the Federal Highway Administration and the Louisiana Department of Transportation and Development. This project was initially funded for construction in July 2005 by the MPO, but monetary constraints have caused delay.

A Stage 1 Planning and Environmental Study is underway for the Sugarhouse Road Extension Project.

The purpose of tonight's public meeting is to:

- Provide information about the proposed project
- Solicit comments about the project from the public and other interested parties
- Explain what has been accomplished so far
- Solicit comments on the alternatives currently being proposed as well as suggestions for other possible alternatives.
- Explain the next steps

In This Handout

Meeting Format.....	1
Public Comments/Participation.....	1
Introduction.....	2
Purpose and Need.....	2
Proposed Action	2
Stage 1 Information	3
Project Area Map & Alternatives.....	3
Project Team	4
Comment Form.....	Insert

SUGARHOUSE ROAD EXTENSION PRELIMINARY PURPOSE AND NEED

1. To provide an alternative route for existing and future heavy commercial and industrial truck traffic, which currently use congested residential routes through the City of Alexandria to access federal and regional highways including I-49, US 71, US 165, US 167, LA 28 and LA 1.
2. To improve the safety for pedestrians and local motorists on present residential routes strained by heavy truck traffic demands.
3. To improve the traffic flow of hurricane evacuation for areas south of the City of Alexandria by providing a connector between major routes.
4. To support economic development in the southern Alexandria area.

SUGARHOUSE ROAD EXTENSION PROPOSED ACTION

The proposed action is the development of a connector route in south Alexandria between Louisiana Highway 1 (LA 1) Interstate Highway 49 (I-49), and interconnected highways US 167, and US 71.

The proposed Sugarhouse Road extension would be constructed and sponsored by the City of Alexandria, and owned and maintained by the State of Louisiana.

We are currently planning to evaluate the Build Option (Alternatives 1, 2 or 3) in the Stage 1 environmental process of this project. Additional right-of-way will be required for this project.

There is currently no letting date for construction of the proposed project.

We welcome your comments on these options, and your input regarding other potential options you think we should consider.

Sugarhouse Road Extension Rapides Parish

STAGE 1 INFORMATION

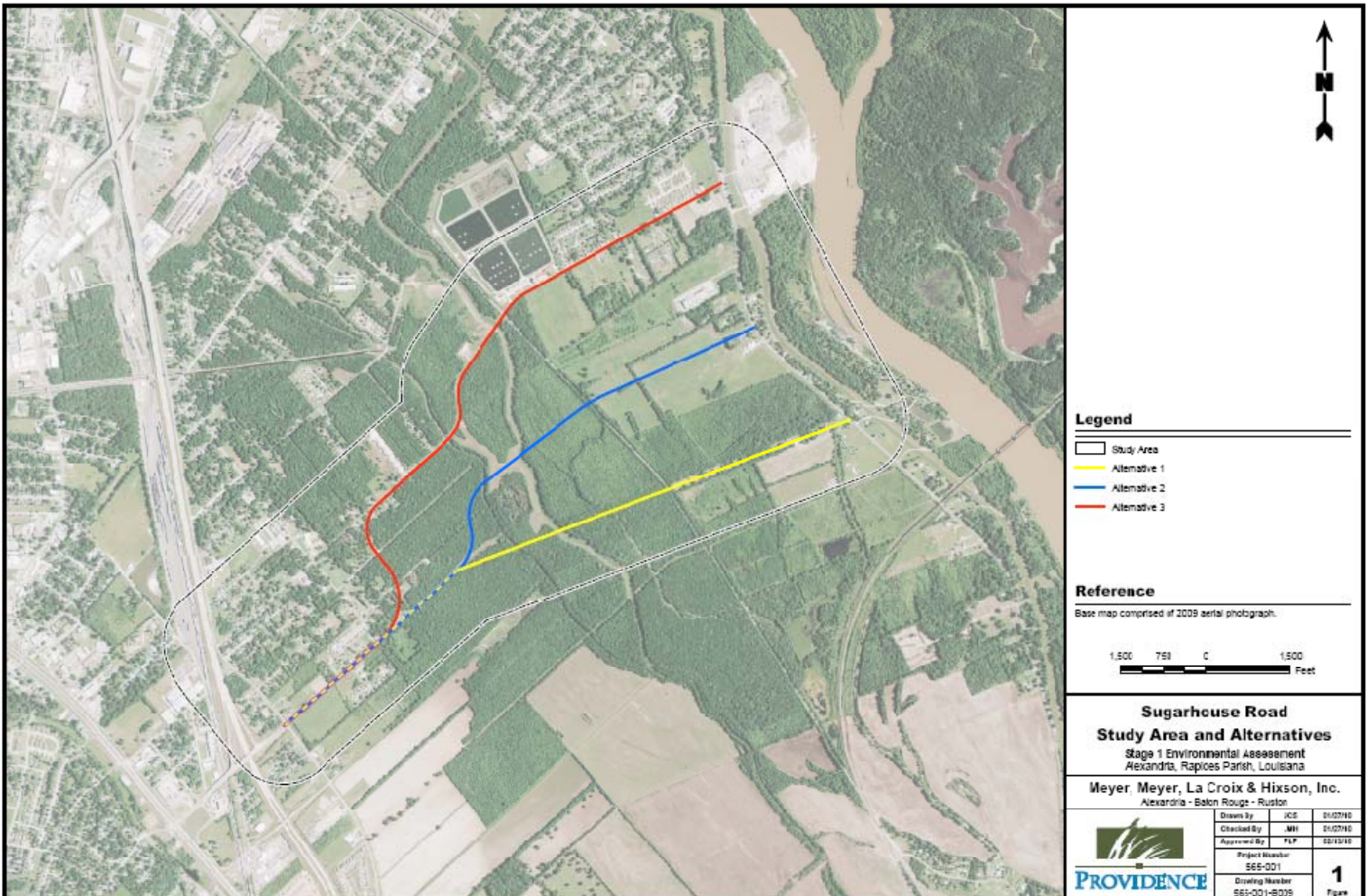
Planning and Environmental

Stage 1 is the Planning and Environmental stage. Its purpose is to continue the planning and environmental effort with more emphasis on environmental review, and refinements to the planning developed in Stage 0. This stage uses the NEPA (National Environmental Policy Act) process and will document potential project impacts. An Environmental Assessment document will be prepared for the proposed project.

During the Environmental Assessment, each alternative, including the No-Build alternative, is analyzed with regard to the following potential environmental impacts:

- | | |
|---|---|
| <ul style="list-style-type: none"> ▪ Social ▪ Economic ▪ Cultural ▪ Noise ▪ Air ▪ Prime Farmlands | <ul style="list-style-type: none"> ▪ Recreational Areas ▪ Wetlands ▪ Water Resources ▪ Flood Plains ▪ Endangered or Threatened Species, and/or Their Habitat |
|---|---|

SUGARHOUSE ROAD EXTENSION PROJECT MAP & ALTERNATIVES



Thank you for your participation.

PROJECT TEAM

LDOTD & FHWA
Project Oversight,
Traffic Engineering

CITY OF ALEXANDRIA
Project Sponsor

**MEYER, MEYER, LACROIX &
HIXSON**
Project Management,
Engineering Design

**PROVIDENCE
ENGINEERING**
Environmental
Assessment Document

FRANKLIN
Public Participation